

# 511 CONDOMINIUM

511 N. BROAD STREET (BROAD & SPRING GARDEN STREETS)  
PHILADELPHIA, PA



**FOR RENT**  
**1 BEDROOM**  
**1 BATHROOM**  
**CONDO**

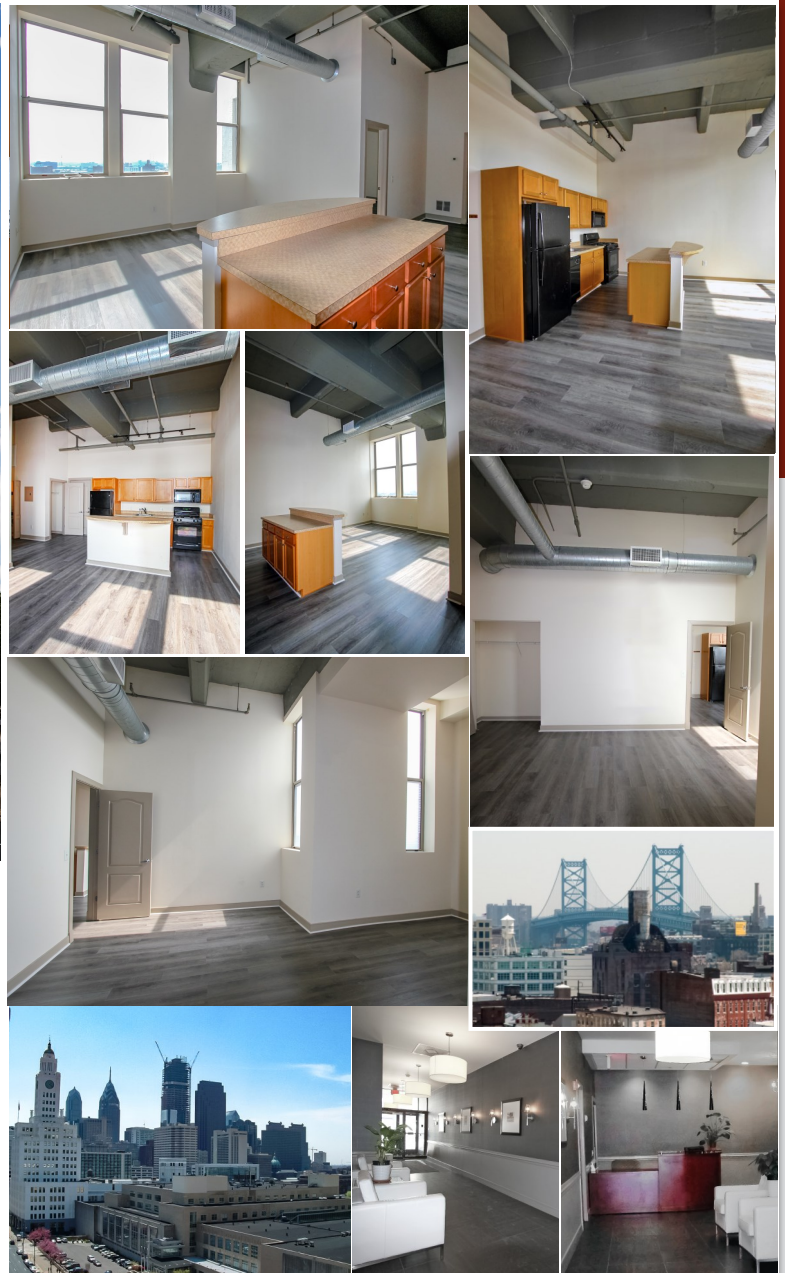
**RENTAL RATE: \$1,475.00/MO.**  
**(PLUS UTILITIES)**

## LOCATION

511 N. Broad Street - Unit #1007  
Philadelphia, PA

## PROPERTY HIGHLIGHTS

- 1 Bedroom/1 Bathroom Condominium - Approx. 746 Square Feet
- 14' Ceiling Heights, Exposed Beams & Ductwork
- Oversized Windows with Spectacular Views
- Open Kitchen with Breakfast Bar.
- Wood Grain Laminate Floors for Easy Care & Maintenance.
- Washer and Dryer in Unit
- Individual Securable Storage Unit on Lower Level
- On the Avenue Of the Arts & Close to Restaurants, Shopping, Parks & Museums!



## PLEASE CONTACT:

**Michele Grasso**

Managing Director

T. 215-701-3818

[michelegrasso@eusrealty.com](mailto:michelegrasso@eusrealty.com)

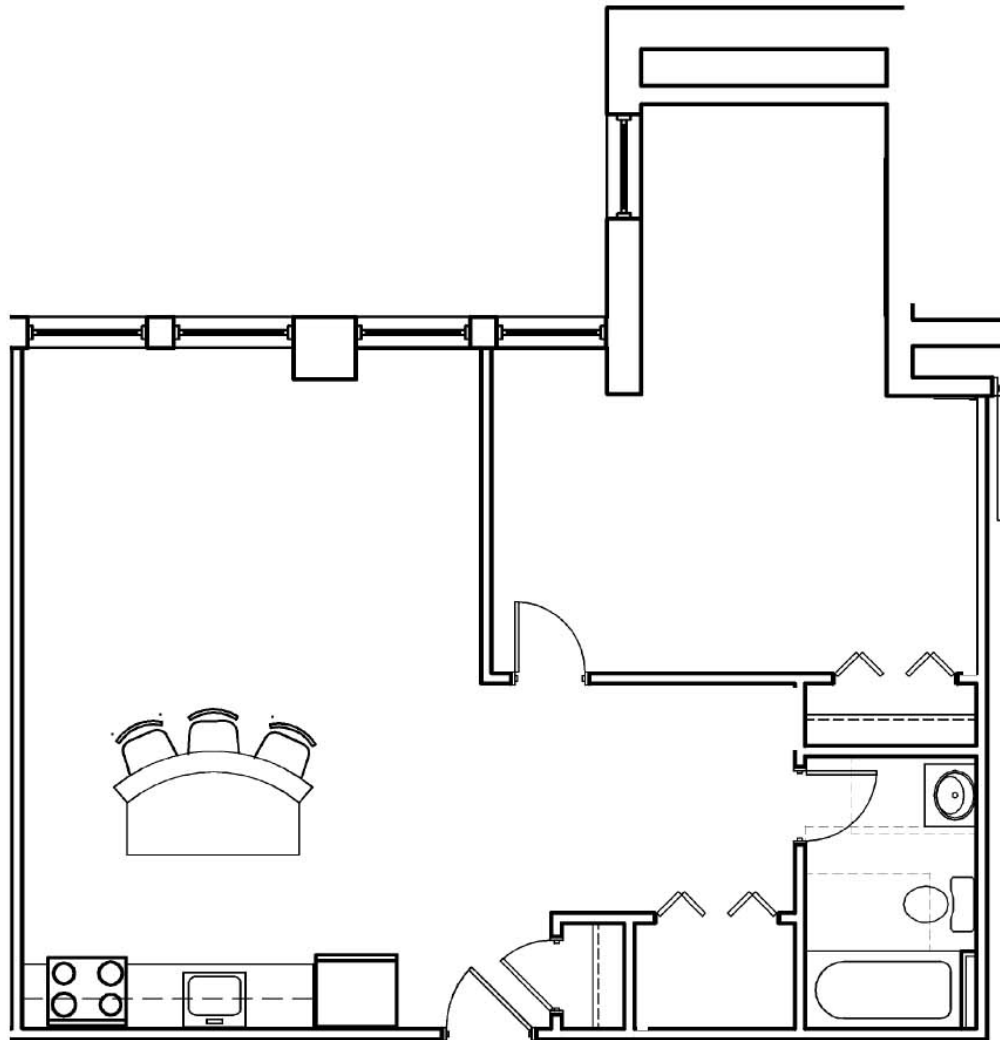
**EUSREALTY**  
ASSOCIATES, INC.

A Full Service Real Estate Company

120-124 E. Lancaster Avenue - Suite 101  
Ardmore - PA - 19003  
T. 215-557-9900 F. 215-701-3839  
[www.eusrealty.com](http://www.eusrealty.com)

# 511 CONDOMINIUM

511 N. BROAD STREET (BROAD & SPRING GARDEN STREETS)  
PHILADELPHIA, PA



**UNIT 7**  
**746 SF**



## PLEASE CONTACT:

**Michele Grasso**  
Managing Director  
T. 215-701-3818  
[michelegrasso@eusrealty.com](mailto:michelegrasso@eusrealty.com)

**EUSREALTY**  
ASSOCIATES, INC.  
A Full Service Real Estate Company

120-124 E. Lancaster Avenue - Suite 101 - Ardmore - PA - 19003  
T.215-557-9900 F.215-701-3839  
[www.eusrealty.com](http://www.eusrealty.com)

The forgoing information was furnished by sources deemed reliable, but no warranty or representation as to its accuracy.  
Subject to errors, omission, changes of price, prior sale or withdrawal from market without notice.