

# RIVERVIEW PLACE

520 N. CHRISTOPHER COLUMBUS BLVD.  
PHILADELPHIA, PA

## SPECIAL INTRODUCTORY RATES FOR NEW TENANTS!\*

### 2 YEAR LEASE WITH OPTION'S

- YEAR 1 AT \$10 PSF
- YEAR 2 AT \$11 PSF
- OPTION'S AT MARKET RATE

\*(NEW TENANT PROMOTION IS SUBJECT TO CERTAIN TERMS AND CONDITIONS)



## A MIXED-USE COMMERCIAL CENTER

### LOCATION

520 N. Christopher Columbus Blvd.  
(At The Corner of Columbus Blvd. & Spring Garden St.)  
Philadelphia, PA

### PROPERTY HIGHLIGHTS

- Suites Available From 1,492 - 15,145 SF  
(\*Special Leasing Promotion Available for New Tenants)
- Ground Floor 1,700 SF Available (Not Part of Special Promotion)
- 8 STORY MIXED-USE COMMERCIAL CENTER
- ZONING: CMX-4
- Architecturally Dramatic Space with Vaulted Wood Beam Ceilings, Exposed Brick Walls & Sky-lights
- Waterfront Views
- Available Parking
- Excellent Access to I-76, I-676 & I-95
- One Block from Market Frankford Line

(\*Special Leasing Promotion for New tenants is Subject to Certain Terms and Conditions)

**Gregory R. Bianchi**

Vice President

T. 215-701-3840

gbianchi@eusrealty.com

**Michele Grasso**

Managing Director

T. 215-701-3818

michelegrasso@eusrealty.com

**USREALTY**  
ASSOCIATES, INC.

A Full Service Real Estate Company

**Brandon Blue**

Sales Associate

T. 215-501-7305

bblue@eusrealty.com



120-124 E. Lancaster Avenue - Suite 101 - Ardmore - PA - 19003

T. 215-557-9900 F. 215-701-3839

[www.eusrealty.com](http://www.eusrealty.com)

The forgoing information was furnished by sources deemed reliable, but no warranty or representation as to its accuracy.

Subject to errors, omission, changes of price, prior sale or withdrawal from market without notice.



# RIVERVIEW PLACE

520 N. CHRISTOPHER COLUMBUS BLVD.  
PHILADELPHIA, PA



## PLEASE CONTACT:

**Gregory R. Bianchi**

Vice President

T. 215-701-3840

gbianchi@eusrealty.com

**Michele Grasso**

Managing Director

T. 215-701-3818

michelegrasso@eusrealty.com

**Brandon Blue**

Sales Associate

T. 215-501-7305

bblue@eusrealty.com

**EUSREALTY**  
ASSOCIATES, INC.  
A Full Service Real Estate Company

120-124 E. Lancaster Avenue - Suite 101 - Ardmore - PA - 19003

T. 215-557-9900 F. 215-701-3839

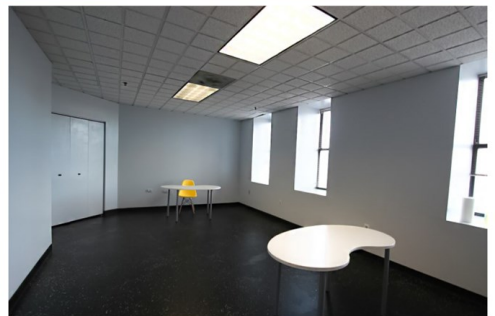
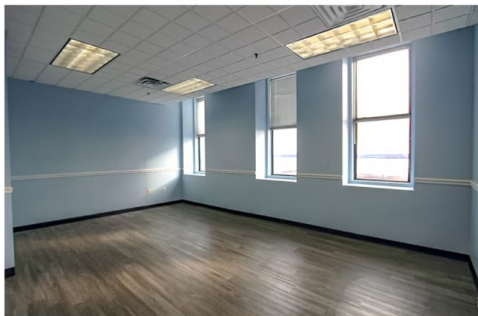
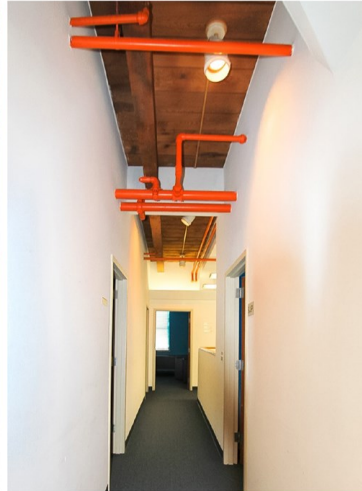
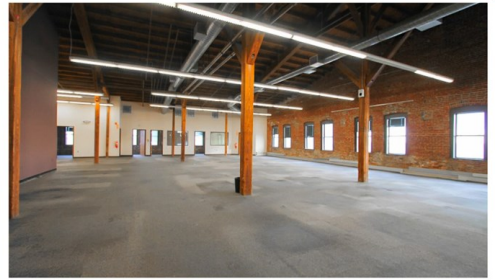
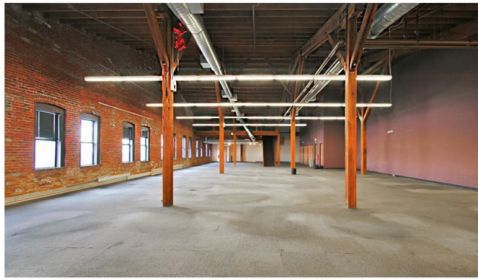
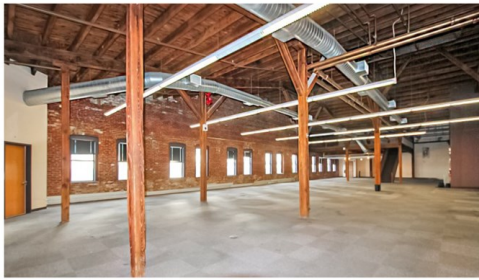
[www.eusrealty.com](http://www.eusrealty.com)

The forgoing information was furnished by sources deemed reliable, but no warranty or representation as to its accuracy.  
Subject to errors, omission, changes of price, prior sale or withdrawal from market without notice.



# RIVERVIEW PLACE

520 N. CHRISTOPHER COLUMBUS BLVD.  
PHILADELPHIA, PA



## PLEASE CONTACT:

**Gregory R. Bianchi**

Vice President

T. 215-701-3840

gbianchi@eusrealty.com

**Michele Grasso**

Managing Director

T. 215-701-3818

michelegrasso@eusrealty.com

**Brandon Blue**

Sales Associate

T. 215-501-7305

bblue@eusrealty.com

**EUSREALTY**  
ASSOCIATES, INC.  
A Full Service Real Estate Company

120-124 E. Lancaster Avenue - Suite 101 - Ardmore - PA - 19003

T.215-557-9900 F.215-701-3839

[www.eusrealty.com](http://www.eusrealty.com)

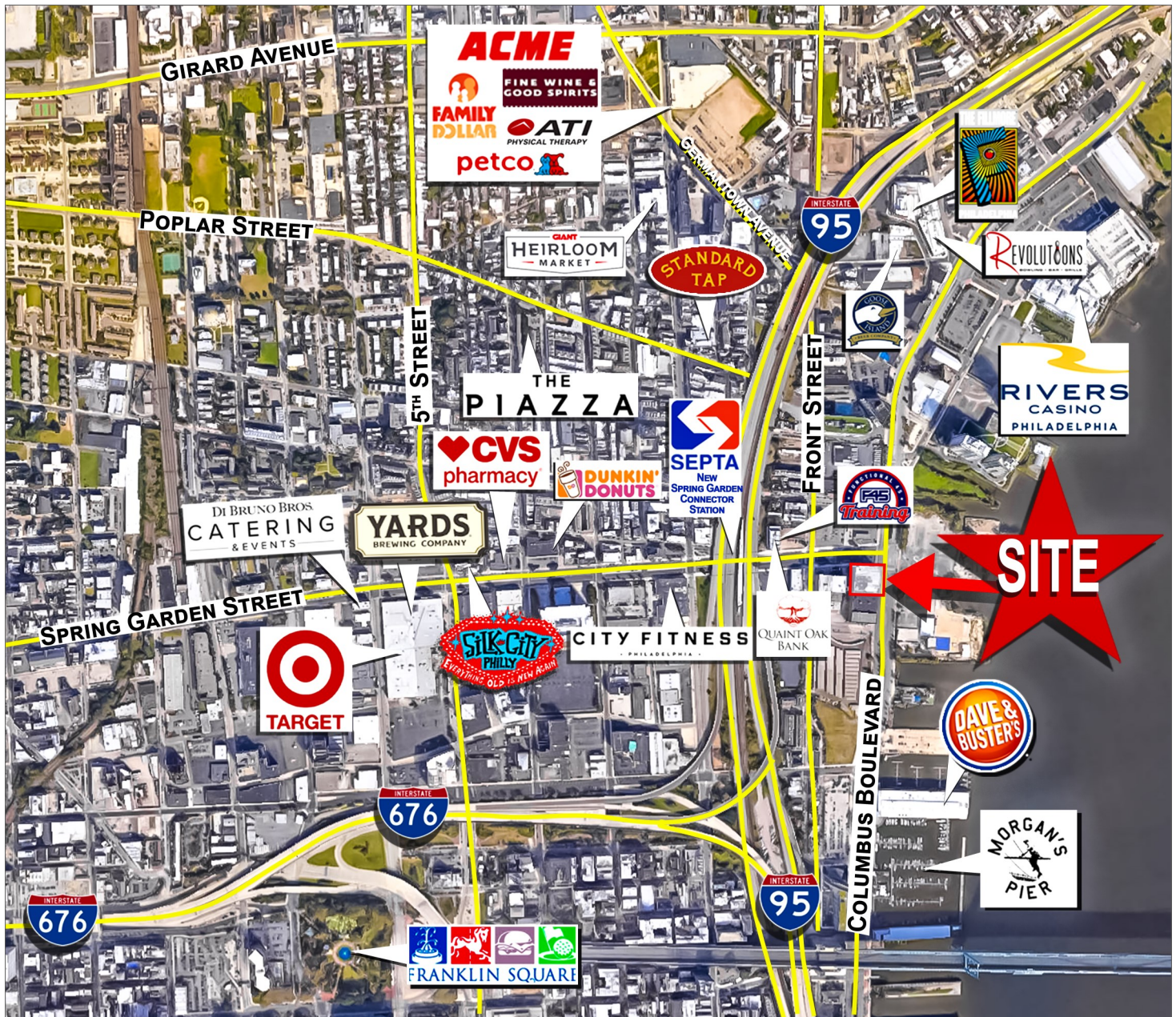
*The forgoing information was furnished by sources deemed reliable, but no warranty or representation as to its accuracy.  
Subject to errors, omission, changes of price, prior sale or withdrawal from market without notice.*



# RIVERVIEW PLACE

520 N. CHRISTOPHER COLUMBUS BLVD.  
PHILADELPHIA, PA

## AERIAL MAP



### PLEASE CONTACT:

**Gregory R. Bianchi**

Vice President

T. 215-701-3840

gbianchi@eusrealty.com

**Michele Grasso**

Managing Director

T. 215-701-3818

michelegrasso@eusrealty.com

**Brandon Blue**

Sales Associate

T. 215-501-7305

bblue@eusrealty.com

**USREALTY**  
ASSOCIATES, INC.  
A Full Service Real Estate Company

120-124 E. Lancaster Avenue - Suite 101 - Ardmore - PA - 19003

T. 215-557-9900 F. 215-701-3839

[www.eusrealty.com](http://www.eusrealty.com)

The forgoing information was furnished by sources deemed reliable, but no warranty or representation as to its accuracy.  
Subject to errors, omission, changes of price, prior sale or withdrawal from market without notice.



# RIVERVIEW PLACE

520 N. CHRISTOPHER COLUMBUS BOULEVARD  
PHILADELPHIA, PA

## TRANSPORTATION MAP



### PLEASE CONTACT:

**Gregory R. Bianchi**

Vice President

T. 215-701-3840

[gbianchi@eusrealty.com](mailto:gbianchi@eusrealty.com)

**Michele Grasso**

Managing Director

T. 215-701-3818

[michelegrasso@eusrealty.com](mailto:michelegrasso@eusrealty.com)

**Brandon Blue**

Sales Associate

T. 215-501-7305

[bblue@eusrealty.com](mailto:bblue@eusrealty.com)

**USREALTY**  
ASSOCIATES, INC.  
A Full Service Real Estate Company

120-124 E. Lancaster Avenue - Suite 101 - Ardmore - PA - 19003

T. 215-557-9900 F. 215-701-3839

[www.eusrealty.com](http://www.eusrealty.com)

The forgoing information was furnished by sources deemed reliable, but no warranty or representation as to its accuracy.  
Subject to errors, omission, changes of price, prior sale or withdrawal from market without notice.