

# HILLTOWN PLAZA

ROUTE 309 & ROUTE 113  
SOUDERTON (BUCKS COUNTY), PA



## HILLTOWN PLAZA - FOR LEASE

### LOCATION

ROUTE 309 & ROUTE 113  
SOUDERTON (BUCKS COUNTY), PA

### PROPERTY HIGHLIGHTS

- **1,600 SF AND 6,215 SF IN-LINE STORES AVAILABLE**
- LOCATED IN 330,000 SF COMMUNITY SHOPPING CENTER ANCHORED BY A HIGHLY SUCCESSFUL 75,000 SF GIANT SUPERMARKET WITH SALES IN EXCESS OF \$69M.
- ANCHORED BY: HOME DEPOT & GIANT FOOD STORE
- EXCELLENT EXPOSURE ON HIGHLY TRAVELED ROUTE 309 & ROUTE 113
- KEY TENANTS: GIANT FOOD STORE, GIANT FUEL, HOME DEPOT, STAPLES, ADVANCED AUTO, RITE AID, MATTRESS FIRM, PA WINE & SPIRITS, CELLSTAR WIRELESS & WENDY'S



### PLEASE CONTACT:

**Gregory R. Bianchi**  
Vice President  
T. 215-701-3840  
gbianchi@eusrealty.com

**Michele Grasso**  
Managing Director  
T. 215-701-3818

**Brandon Blue**  
Sales Associate  
T. 215-501-7305  
bblue@eusrealty.com

LEASED BY:

**USREALTY**  
ASSOCIATES, INC.  
A Full Service Real Estate Company

DEVELOPED BY:



120-124 E. Lancaster Avenue - Suite 101 - Ardmore - PA - 19003

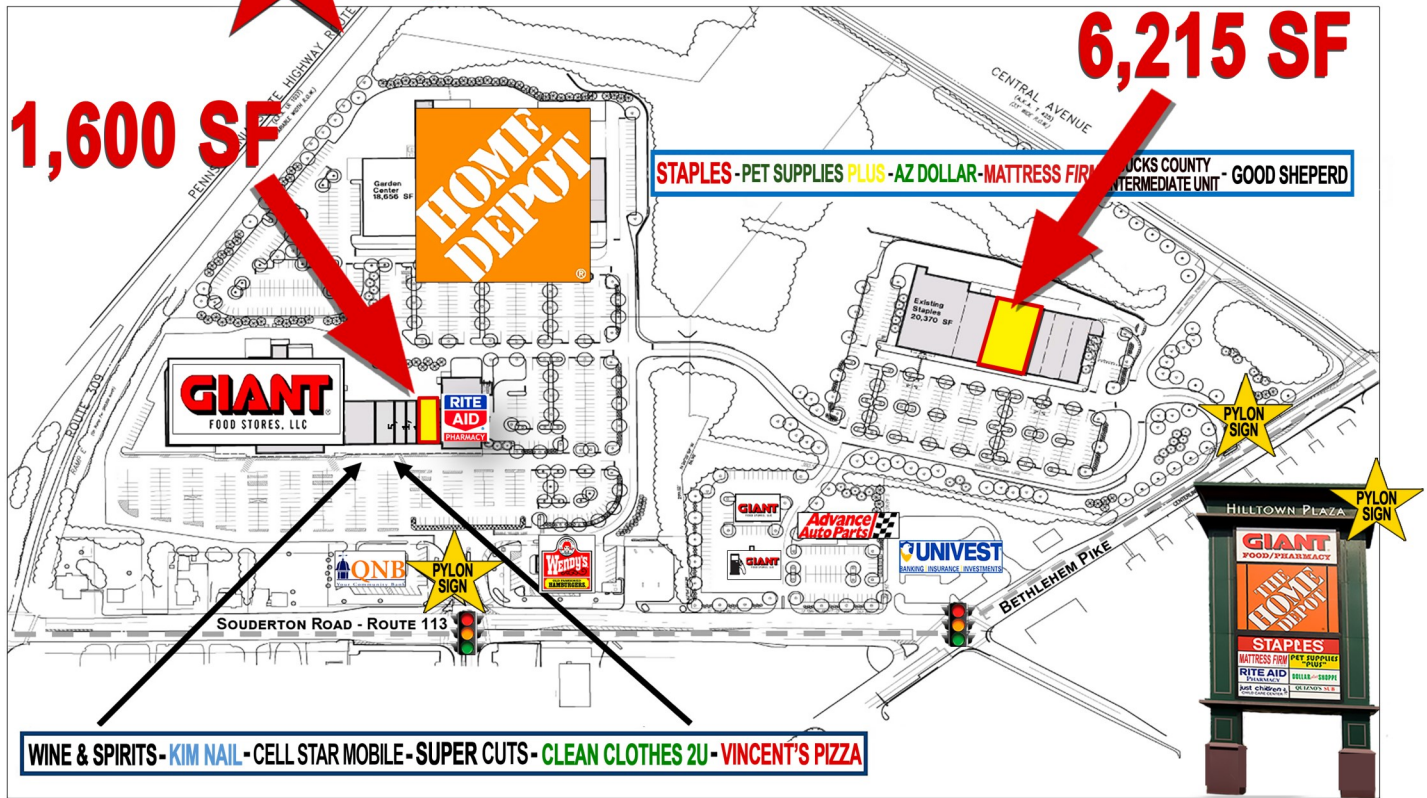
T. 215-557-9900 F. 215-701-3839

www.eusrealty.com

# HILLTOWN PLAZA

ROUTE 309 & ROUTE 113  
SOUDERTON (BUCKS COUNTY), PA

**★ 2 AVAILABILITIES**



## DEMOGRAPHIC OVERVIEW REPORT

POPULATION	1 MILE	3 MILE	5 MILE
2028 PROJECTION:	8,630	48,951	111,096
2023 ESTIMATE:	8,262	46,927	106,733
POP GROWTH 2023-2028:	4.45%	4.31%	4.09%
HOUSEHOLDS			
2028 PROJECTION:	3,492	18,814	42,018
HH GROWTH 2023-2028:	4.43%	4.33%	4.05%
2023 AVG. HH INCOME:	\$95,213	\$97,749	\$109,319

### PLEASE CONTACT:

**Gregory R. Bianchi**  
Vice President  
T. 215-701-3840  
gbianchi@eusrealty.com

**Michele Grasso**  
Managing Director  
T. 215-701-3818  
michelegrasso@eusrealty.com

**Brandon Blue**  
Sales Associate  
T. 215-501-7305  
bblue@eusrealty.com

### LEASED BY:

**USREALTY**  
ASSOCIATES, INC.  
A Full Service Real Estate Company

### DEVELOPED BY:

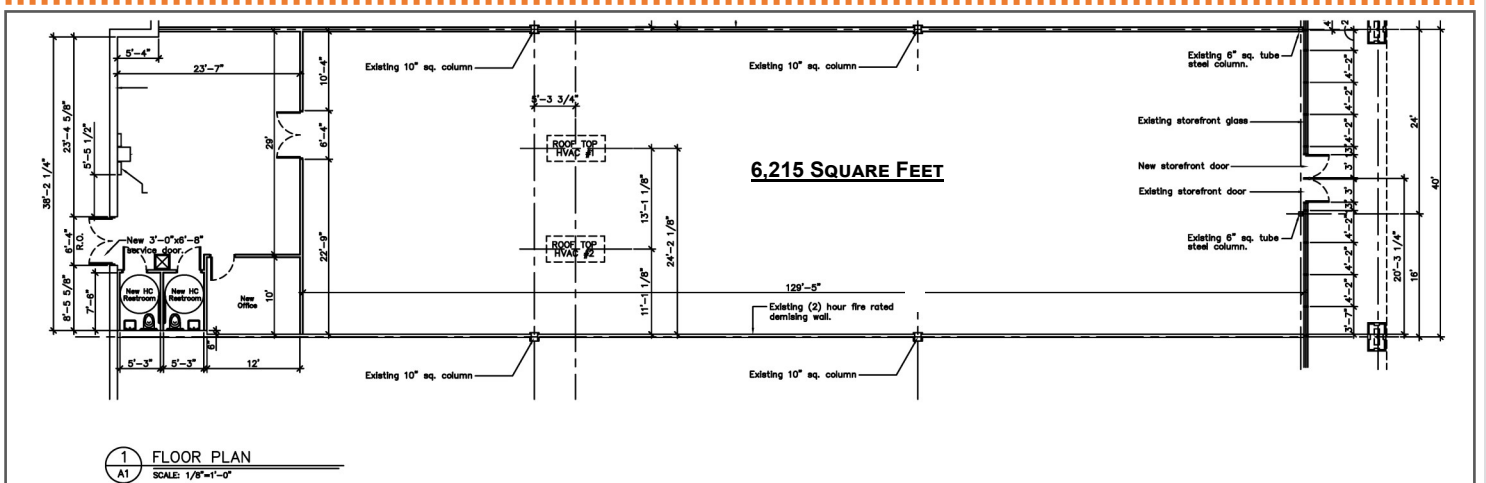
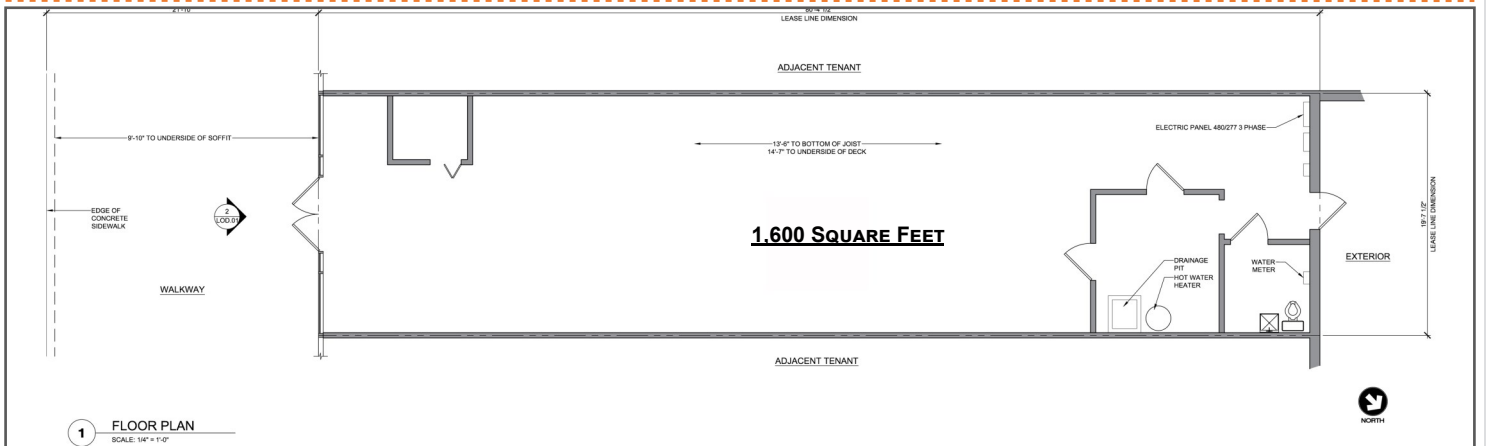
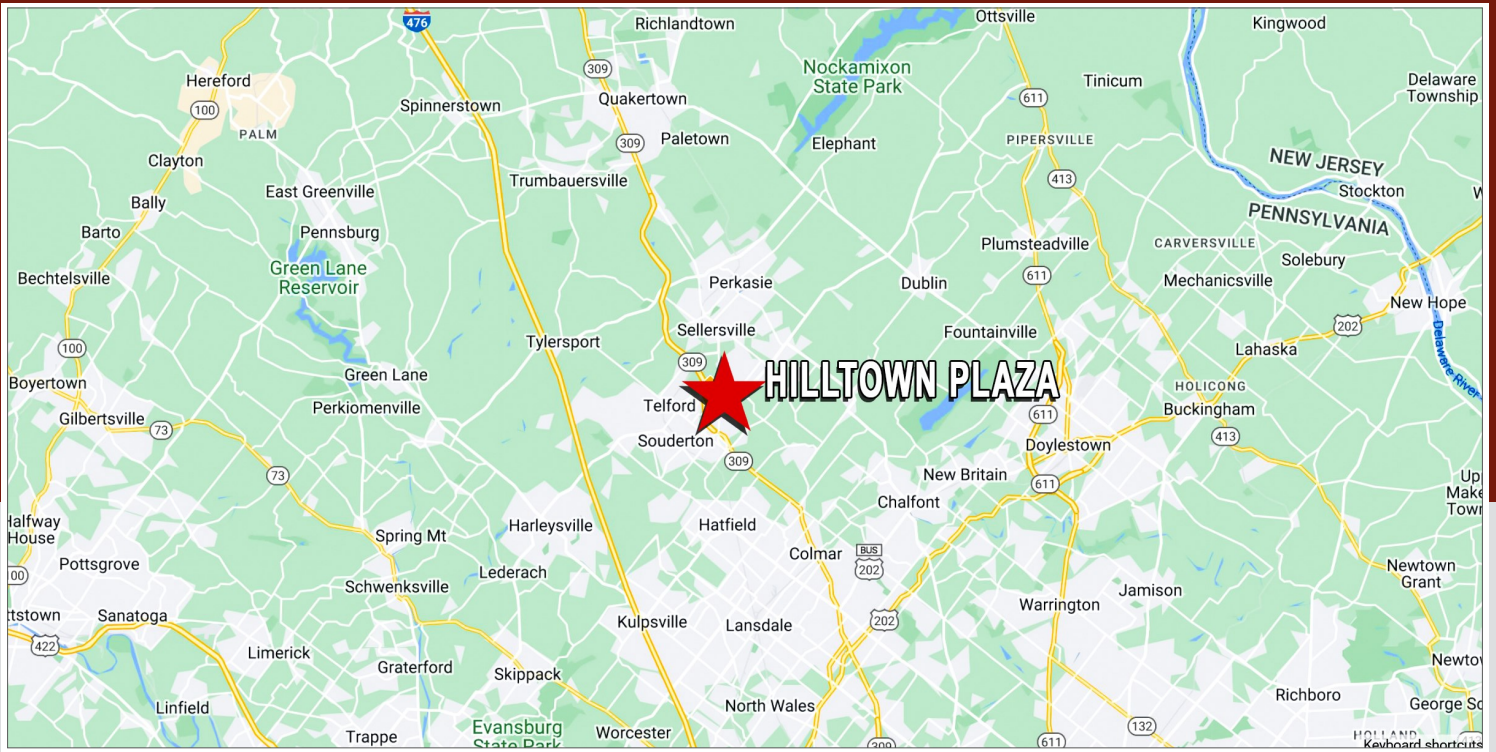


120-124 E. Lancaster Avenue - Suite 101 - Ardmore - PA - 19003  
T. 215-557-9900 F. 215-701-3839  
www.eusrealty.com

# HILLTOWN PLAZA

## ROUTE 309 & ROUTE 113

### SOUDERTON (BUCKS COUNTY), PA



120-124 E. Lancaster Avenue - Suite 101 - Ardmore - PA - 19003  
 T.215-557-9900 F.215-701-3839  
[www.eusrealty.com](http://www.eusrealty.com)