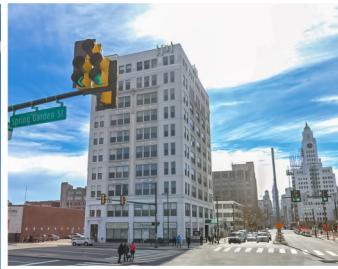


511 CONDOMINIUM

511 N. BROAD STREET (BROAD & SPRING GARDEN STREETS)
PHILADELPHIA, PA



LOCATION

511 N. Broad Street - Unit # 907
Philadelphia, PA

PROPERTY HIGHLIGHTS

- 1 Bedroom/1 Bathroom Condominium - Approx. 746 Square Feet.
- 14' Ceiling Heights, Exposed Beams & Ductwork.
- Wood Grain Laminate Floors for Easy Care and Maintenance.
- Open Kitchen with Breakfast Bar.
- Washer/Dryer in Unit.
- Individual Securable Storage Unit on Lower Level.
- On the Avenue Of the Arts & Close to Restaurants, Shopping, Parks & Museums!
- Easy Access to I-76 & I-95, Public Transportation & Parking Steps Away.

FOR SALE OR LEASE

SALE PRICE: \$215,000.00

RENTAL RATE: \$1,300.00/mo.

PLEASE CONTACT:

Michele Grasso

Managing Director

T. 215-701-3818

michelegrasso@eusrealty.com

EUSREALTY
ASSOCIATES, INC.

A Full Service Real Estate Company

120-124 E. Lancaster Avenue - Suite 101 Ardmore
- PA - 19003 T.215-

557-9900 F.215-701-3839

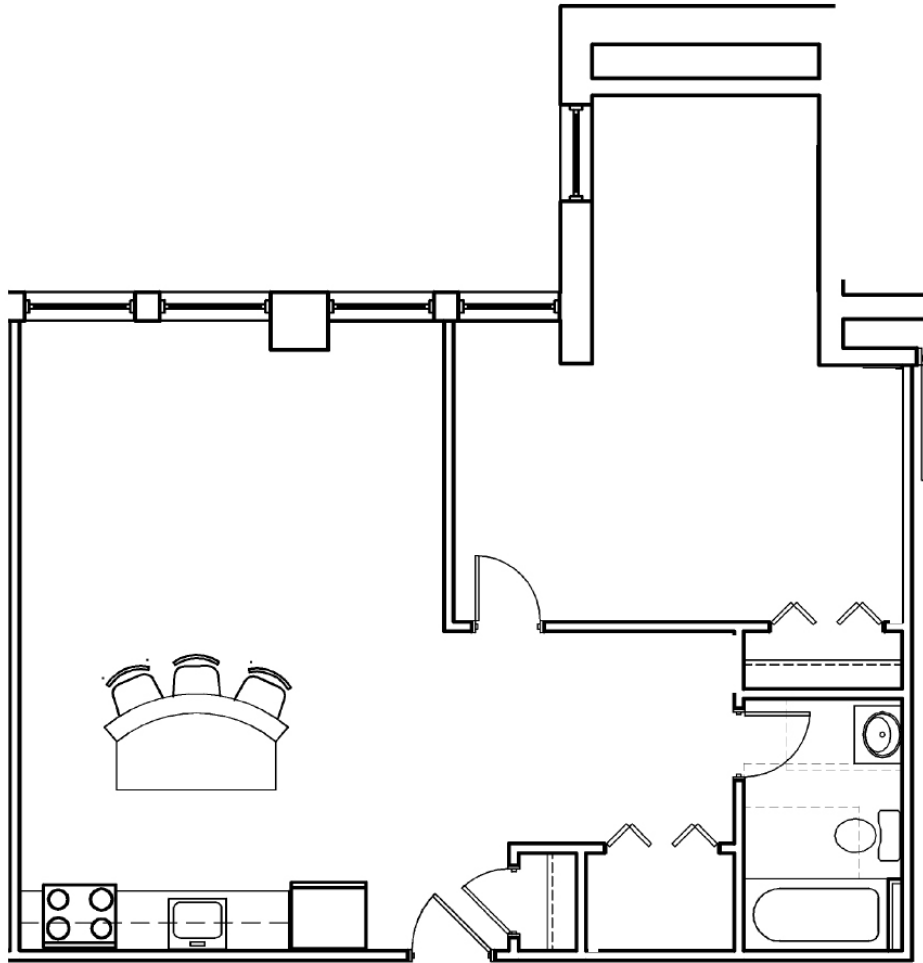
www.eusrealty.com

The foregoing information was furnished by sources deemed reliable, but no warranty or representation as to its accuracy.

Subject to errors, omission, changes of price, prior sale or withdrawal from market without notice.

511 CONDOMINIUM

511 N. BROAD STREET (BROAD & SPRING GARDEN STREETS)
PHILADELPHIA, PA



UNIT 7
746 SF



PLEASE CONTACT: **Michele Grasso**
Managing Director
T. 215-701-3818
michelegrasso@eusrealty.com

EUSREALTY
ASSOCIATES, INC.
A Full Service Real Estate Company

120-124 E. Lancaster Avenue - Suite 101 - Ardmore - PA - 19003
T.215-557-9900 F.215-701-3839
www.eusrealty.com

The forgoing information was furnished by sources deemed reliable, but no warranty or representation as to its accuracy.
Subject to errors, omission, changes of price, prior sale or withdrawal from market without notice.