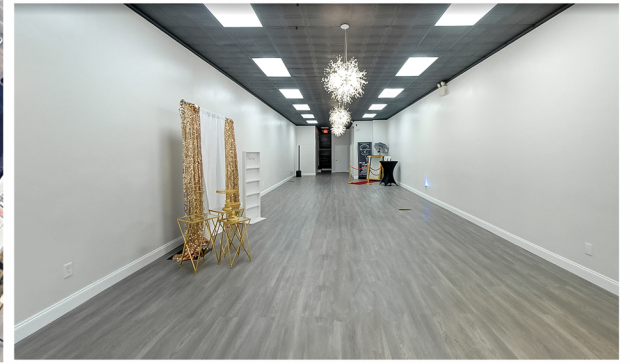


FOR LEASE: 1,980 SF WITH FULL BASEMENT

1623 E. Wadsworth Ave, Philadelphia, PA 19150



LOCATION

1623 E. Wadsworth Ave
Philadelphia, PA 19150

PROPERTY HIGHLIGHTS

- Former Event Center
- 1,980 SF with full basement
- High profile location
- Busy Cheltenham Ave intersection
- On-street parking
- Neighboring tenants include:

♥ **CVS pharmacy**

DUNKIN'

ROYAL MEATS

FAMILY DOLLAR



PLEASE CONTACT:

Gregory R. Bianchi
Vice President

T. 215-701-3840
gbianchi@eusrealty.com

EUSREALTY
ASSOCIATES, INC.
A Full Service Real Estate Company

120-124 E. Lancaster Avenue - Suite 101 - Ardmore - PA - 19003

T. 215-557-9900 F. 215-701-3839

www.eusrealty.com

FOR LEASE: 1,980 SF WITH FULL BASEMENT

1623 E. Wadsworth Ave, Philadelphia, PA 19150



Demographic Overview	1 Mile	3 Miles	5 Miles
2023 Population	25,093	194,430	481,905
2023 Total Households	10,477	78,949	191,366
2023 Median Household Income	\$72,893	\$84,734	\$81,933

Demographic Source: Applied Geographic Solutions. 2023 Estimates.

PLEASE CONTACT:

Gregory R. Bianchi
 Vice President
 T. 215-701-3840
 gbianchi@eusrealty.com



120-124 E. Lancaster Avenue - Suite 101 - Ardmore - PA - 19003
 T.215-557-9900 F.215-701-3839
 www.eusrealty.com