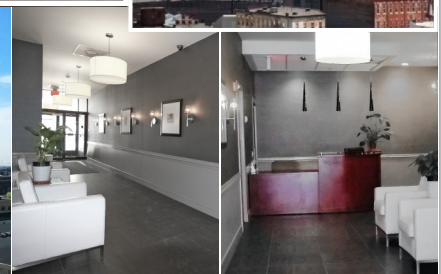
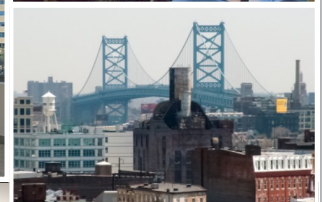
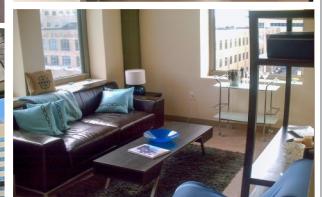
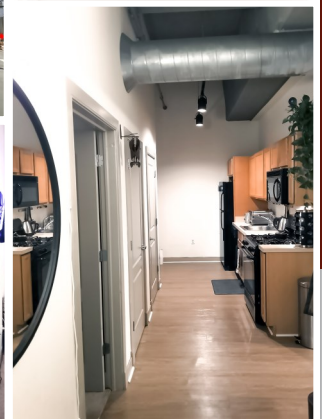
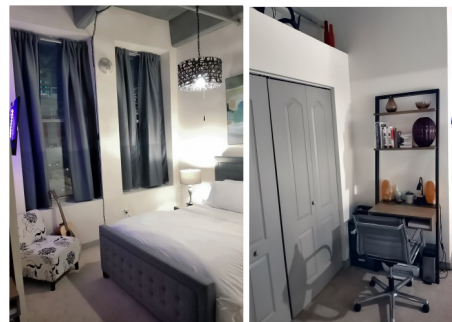
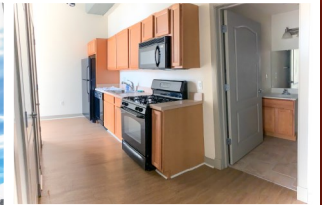


511 CONDOMINIUM

511 N. BROAD STREET (BROAD & SPRING GARDEN STREETS)
PHILADELPHIA, PA



LOCATION

511 N. Broad Street - Unit # 405
Philadelphia, PA

PROPERTY HIGHLIGHTS

- 1 Bedroom/1 Bathroom Condominium - Approx. 689 Square Feet
- 14' Ceiling Heights, Exposed Beams & Ductwork
- Oversized Windows with Spectacular Views
- Open Kitchen with Breakfast Bar.
- Wood Grain Laminate Floors for Easy Care & Maintenance.
- Washer and Dryer Hook-up in Unit
- Individual Securable Storage Unit on Lower Level
- On the Avenue Of the Arts & Close to Restaurants, Shopping, Parks & Museums!
- Easy Access to I-76 & I-95, Public Transportation & Parking Steps Away.

PLEASE CONTACT:

Michele Grasso

Managing Director

T. 215-701-3818

michelegrasso@eusrealty.com

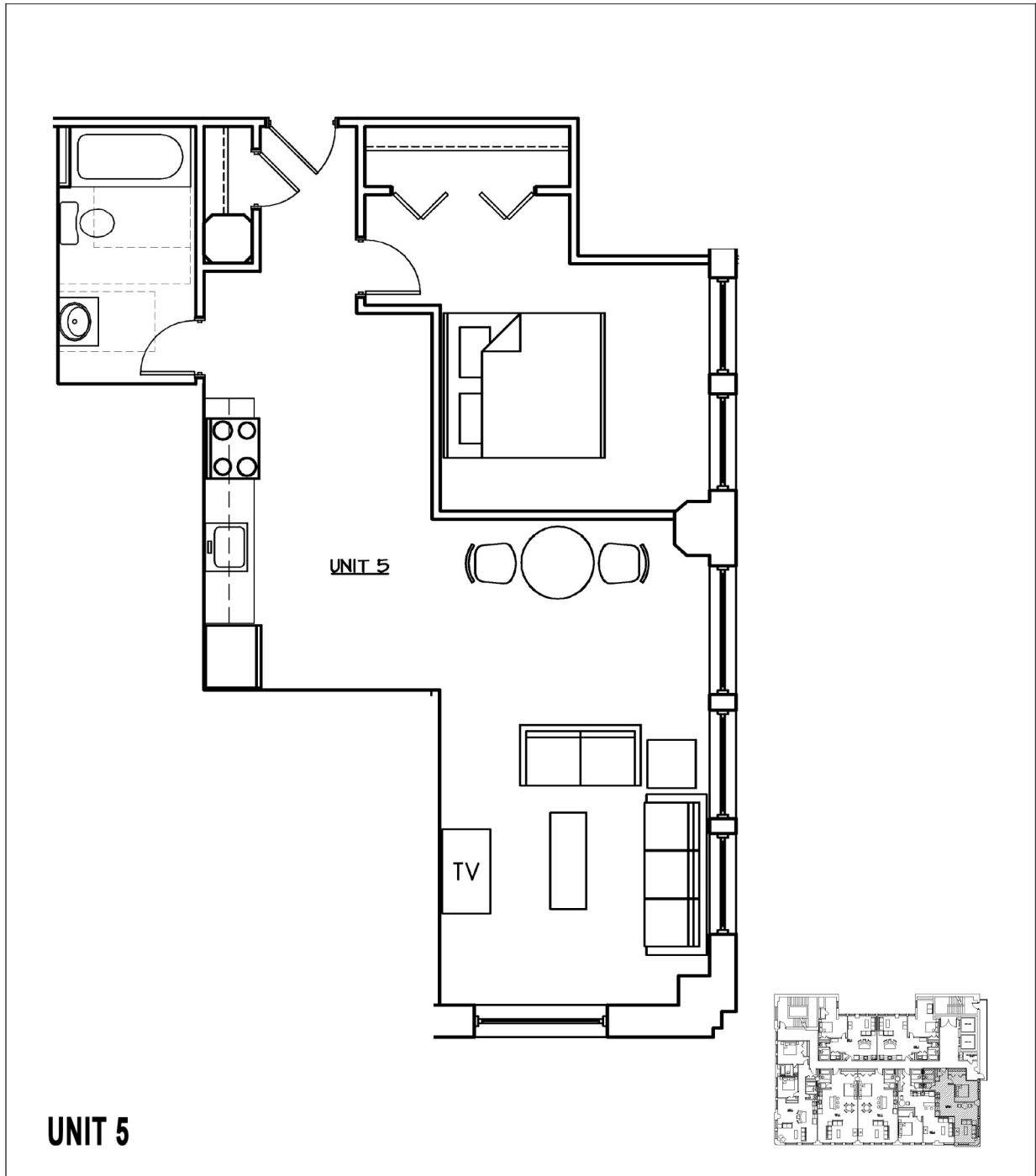
EUSREALTY
ASSOCIATES, INC.

A Full Service Real Estate Company

120-124 E. Lancaster Avenue - Suite 101
Ardmore - PA - 19003
T. 215-557-9900 F. 215-701-3839
www.eusrealty.com

511 CONDOMINIUM

511 N. BROAD STREET (BROAD & SPRING GARDEN STREETS)
PHILADELPHIA, PA



PLEASE CONTACT:

Michele Grasso
Managing Director
T. 215-701-3818
michelegrasso@eusrealty.com

EUSREALTY
ASSOCIATES, INC.
A Full Service Real Estate Company

120-124 E. Lancaster Avenue - Suite 101 - Ardmore - PA - 19003
T.215-557-9900 F.215-701-3839
www.eusrealty.com

The forgoing information was furnished by sources deemed reliable, but no warranty or representation as to its accuracy.
Subject to errors, omission, changes of price, prior sale or withdrawal from market without notice.