

123 EGG HARBOR ROAD
BUILDING 500 - SUITES #506-507
SEWELL (GLOUCESTER COUNTY), NJ



AVAILABLE FOR SALE
PRICE REDUCED! \$449,000.00

LOCATION

Tower Commons Office Complex
123 Egg Harbor Drive
Building 500 - Suites #506-507
Sewell (Gloucester County), PA

PROPERTY HIGHLIGHTS

- Serving Washington Township, Glassboro, Mantua, Deptford and more!
- Close Proximity to Five Points Intersection
- Access from both Delsea Drive and Egg Harbor Road
- 2,400 Square Feet of Prime Office Space (Condo Unit)
- Select Furniture and FF&E Included
- Move-in Ready with a Versatile Layout



PLEASE CONTACT:

Gregory R. Bianchi
Vice President
T. 215-701-3840
gbianchi@eusrealty.com

USREALTY
ASSOCIATES, INC.
A Full Service Real Estate Company

120-124 E. Lancaster Avenue - Suite 101 - Ardmore - PA - 19003
T.215-557-9900 F.215-701-3839
www.eusrealty.com

123 EGG HARBOR ROAD
BUILDING 500 - SUITES #506-507
SEWELL (GLOUCESTER COUNTY), NJ

AERIAL MAP



PLEASE CONTACT:

Gregory R. Bianchi
Vice President
T. 215-701-3840
gbianchi@eusrealty.com

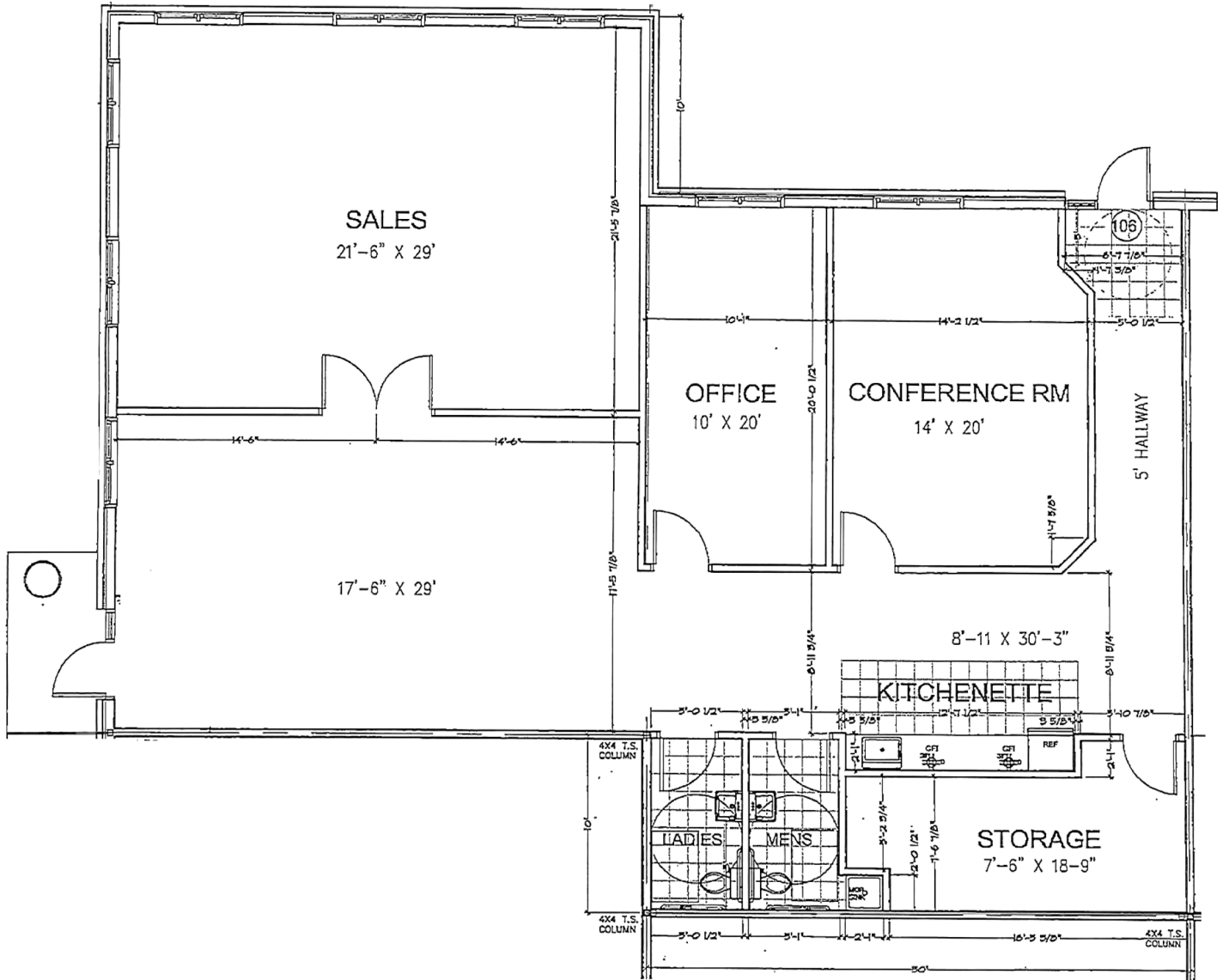
USREALTY
ASSOCIATES, INC.
A Full Service Real Estate Company

120-124 E. Lancaster Avenue - Suite 101 - Ardmore - PA - 19003
T.215-557-9900 F.215-701-3839
www.eusrealty.com

The forgoing information was furnished by sources deemed reliable, but no warranty or representation as to its accuracy.
Subject to errors, omission, changes of price, prior sale or withdrawal from market without notice.

123 EGG HARBOR ROAD
BUILDING 500 - SUITES #506-507
SEWELL (GLOUCESTER COUNTY), NJ

FLOOR PLAN



PLEASE CONTACT:

Gregory R. Bianchi
Vice President
T. 215-701-3840
gbianchi@eusrealty.com

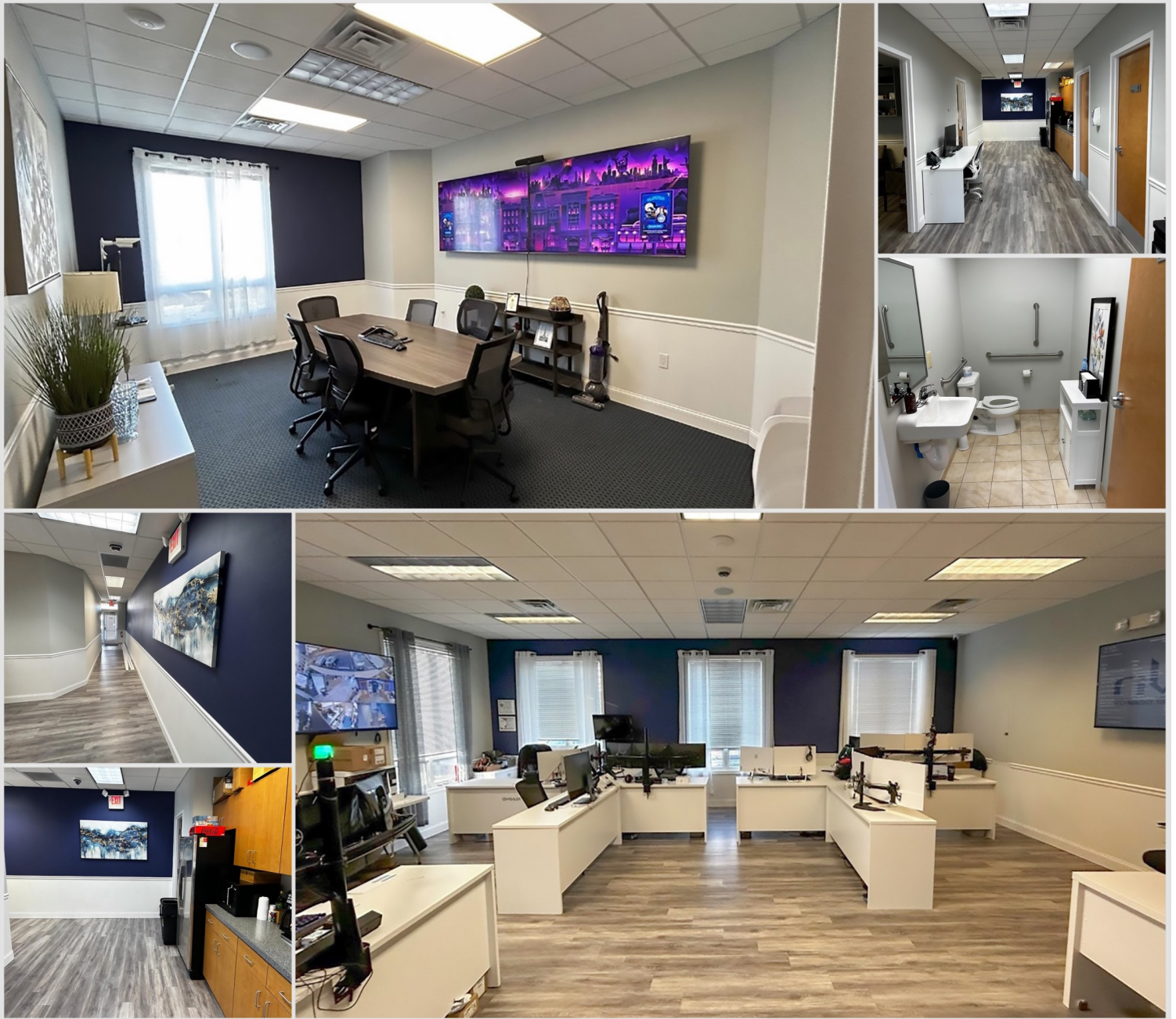


120-124 E. Lancaster Avenue - Suite 101 - Ardmore - PA - 19003
T.215-557-9900 F.215-701-3839
www.eusrealty.com

*The forgoing information was furnished by sources deemed reliable, but no warranty or representation as to its accuracy.
Subject to errors, omission, changes of price, prior sale or withdrawal from market without notice.*

123 EGG HARBOR ROAD
BUILDING 500 - SUITES #506-507
SEWELL (GLOUCESTER COUNTY), NJ

INTERIOR PHOTOS



PLEASE CONTACT:

Gregory R. Bianchi
Vice President
T. 215-701-3840
gbianchi@eusrealty.com

USREALTY
ASSOCIATES, INC.
A Full Service Real Estate Company

120-124 E. Lancaster Avenue - Suite 101 - Ardmore - PA - 19003
T.215-557-9900 F.215-701-3839
www.eusrealty.com

The forgoing information was furnished by sources deemed reliable, but no warranty or representation as to its accuracy.
Subject to errors, omission, changes of price, prior sale or withdrawal from market without notice.