

RIVERVIEW PLACE

520 N. CHRISTOPHER COLUMBUS BLVD.
PHILADELPHIA, PA

SPECIAL INTRODUCTORY RATES FOR NEW TENANTS!*

2 YEAR LEASE WITH OPTION'S

- YEAR 1 AT \$10 PSF
- YEAR 2 AT \$11 PSF
- OPTION'S AT MARKET RATE

*** (NEW TENANT PROMOTION IS SUBJECT TO CERTAIN TERMS AND CONDITIONS)**



A MIXED-USE COMMERCIAL CENTER

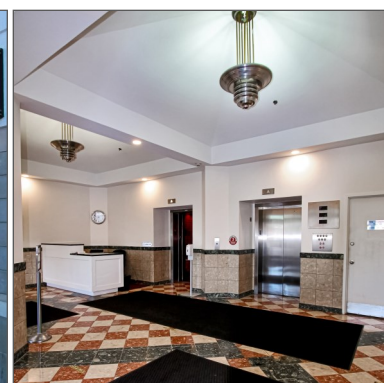
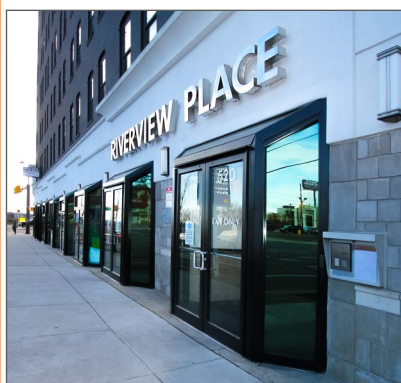
LOCATION

520 N. Christopher Columbus Blvd.
(At The Corner of Columbus Blvd. & Spring Garden St.)
Philadelphia, PA

PROPERTY HIGHLIGHTS

- Suites Available From 2,792 - 15,145 SF
(*Special Leasing Promotion Available for New Tenants)
- Ground Floor Suites Available up to 2,707 SF
(Will Divide - Not Part of Special Promotion)
- 8 STORY MIXED-USE COMMERCIAL CENTER
- ZONING: CMX-4
- Architecturally Dramatic Space with Vaulted Wood Beam Ceilings, Exposed Brick Walls & Sky-lights
- Waterfront Views
- Available Parking
- Excellent Access to I-76, I-676 & I-95
- One Block from Market Frankford Line

(*Special Leasing Promotion for New tenants is Subject to Certain Terms and Conditions)



Gregory R. Bianchi

Vice President

T. 215-701-3840

gbianchi@eusrealty.com

Michele Grasso

Managing Director

T. 215-701-3818

michelegrasso@eusrealty.com

USREALTY
ASSOCIATES, INC.

A Full Service Real Estate Company

Brandon Blue

Sales Associate

T. 215-501-7305

bblue@eusrealty.com

120-124 E. Lancaster Avenue - Suite 101 - Ardmore - PA - 19003

T. 215-557-9900 F. 215-701-3839

www.eusrealty.com

The forgoing information was furnished by sources deemed reliable, but no warranty or representation as to its accuracy.

Subject to errors, omission, changes of price, prior sale or withdrawal from market without notice.

RIVERVIEW PLACE

520 N. CHRISTOPHER COLUMBUS BLVD.
PHILADELPHIA, PA



PLEASE CONTACT:

Gregory R. Bianchi

Vice President

T. 215-701-3840

gbianchi@eusrealty.com

Michele Grasso

Managing Director

T. 215-701-3818

michelegrasso@eusrealty.com

Brandon Blue

Sales Associate

T. 215-501-7305

bblue@eusrealty.com

USREALTY
ASSOCIATES, INC.
A Full Service Real Estate Company

120-124 E. Lancaster Avenue - Suite 101 - Ardmore - PA - 19003

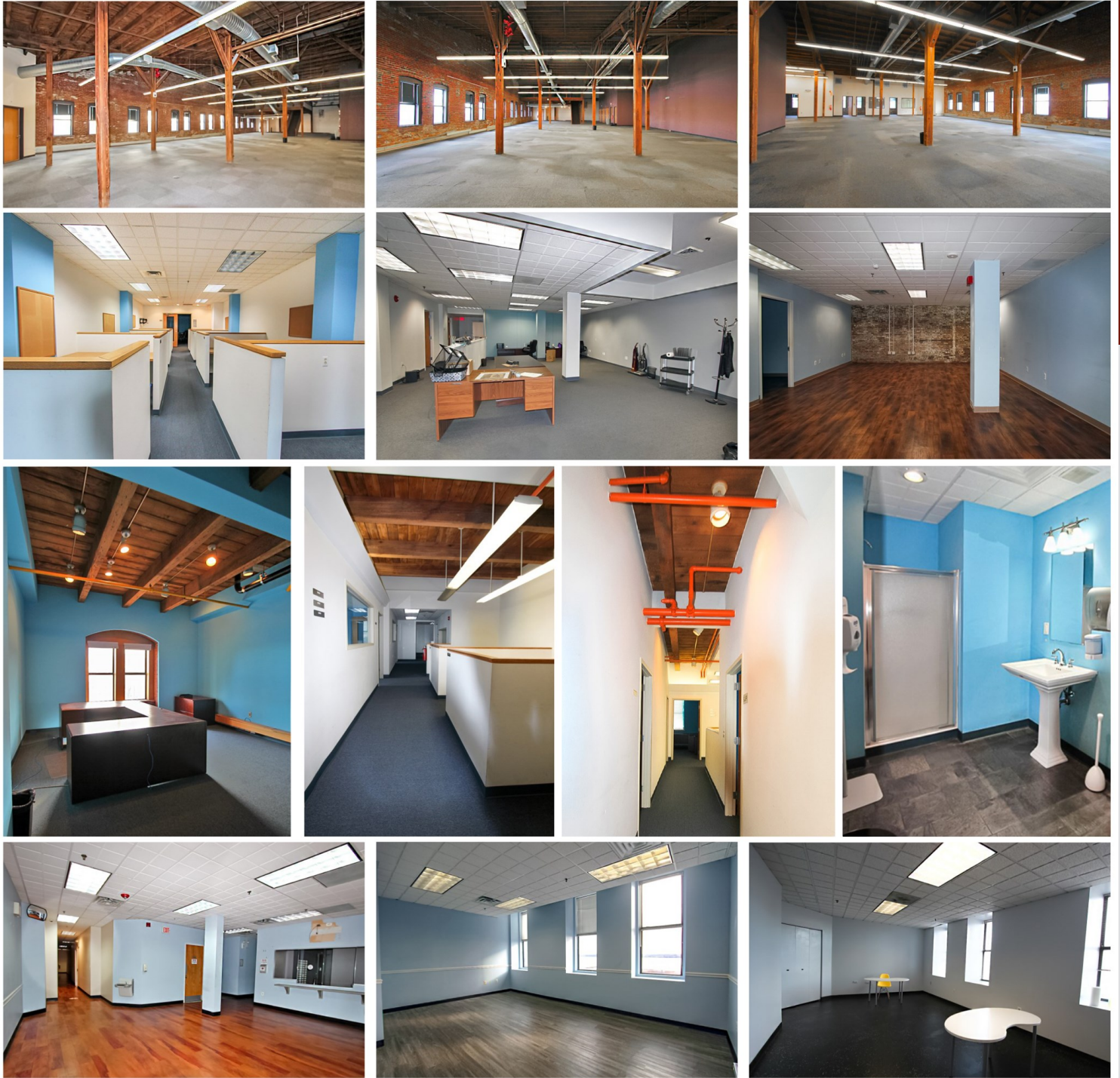
T. 215-557-9900 F. 215-701-3839

www.eusrealty.com

*The foregoing information was furnished by sources deemed reliable, but no warranty or representation as to its accuracy.
Subject to errors, omission, changes of price, prior sale or withdrawal from market without notice.*

RIVERVIEW PLACE

520 N. CHRISTOPHER COLUMBUS BLVD.
PHILADELPHIA, PA



PLEASE CONTACT:

Gregory R. Bianchi

Vice President

T. 215-701-3840

gbianchi@eusrealty.com

Michele Grasso

Managing Director

T. 215-701-3818

michelegrasso@eusrealty.com

Brandon Blue

Sales Associate

T. 215-501-7305

bblue@eusrealty.com

USREALTY
ASSOCIATES, INC.
A Full Service Real Estate Company

120-124 E. Lancaster Avenue - Suite 101 - Ardmore - PA - 19003

T. 215-557-9900 F. 215-701-3839

www.eusrealty.com

*The forgoing information was furnished by sources deemed reliable, but no warranty or representation as to its accuracy.
Subject to errors, omission, changes of price, prior sale or withdrawal from market without notice.*

RIVERVIEW PLACE

520 N. CHRISTOPHER COLUMBUS BLVD.
PHILADELPHIA, PA

AERIAL MAP



PLEASE CONTACT:

Gregory R. Bianchi

Vice President

T. 215-701-3840

gbianchi@eusrealty.com

Michele Grasso

Managing Director

T. 215-701-3818

michelegrasso@eusrealty.com

Brandon Blue

Sales Associate

T. 215-501-7305

bblue@eusrealty.com

USREALTY
ASSOCIATES, INC.
A Full Service Real Estate Company

120-124 E. Lancaster Avenue - Suite 101 - Ardmore - PA - 19003

T. 215-557-9900 F. 215-701-3839

www.eusrealty.com

The forgoing information was furnished by sources deemed reliable, but no warranty or representation as to its accuracy.
Subject to errors, omission, changes of price, prior sale or withdrawal from market without notice.

RIVERVIEW PLACE

520 N. CHRISTOPHER COLUMBUS BOULEVARD
PHILADELPHIA, PA

TRANSPORTATION MAP



PLEASE CONTACT:

Gregory R. Bianchi

Vice President

T. 215-701-3840

gbianchi@eusrealty.com

Michele Grasso

Managing Director

T. 215-701-3818

michelegrasso@eusrealty.com

Brandon Blue

Sales Associate

T. 215-501-7305

bblue@eusrealty.com

USREALTY
ASSOCIATES, INC.
A Full Service Real Estate Company

120-124 E. Lancaster Avenue - Suite 101 - Ardmore - PA - 19003

T. 215-557-9900 F. 215-701-3839

www.eusrealty.com

The forgoing information was furnished by sources deemed reliable, but no warranty or representation as to its accuracy.
Subject to errors, omission, changes of price, prior sale or withdrawal from market without notice.