

# 2135-37 S. 17TH STREET

PHILADELPHIA, PA



**AVAILABLE**  
**FOR SALE: \$500,000.00**

## LOCATION

2135-37 S. 17th Street  
Philadelphia, PA

## PROPERTY HIGHLIGHTS

- Approximately 3,000 Square Feet
- Located in Densely Populated South Philadelphia
- Zoned RSA-5
- Located 1/2 Mile West of The Stadium District
- Taxes: \$6,027.54 (2023)



## PLEASE CONTACT:

**Gregory R. Bianchi**  
Vice President  
T. 215-701-3840  
gbianchi@eusrealty.com

**EUSREALTY**  
ASSOCIATES, INC.  
A Full Service Real Estate Company

120-124 E. Lancaster Avenue - Suite 101 - Ardmore - PA - 19003

T. 215-557-9900 F. 215-701-3839

[www.eusrealty.com](http://www.eusrealty.com)

# 2135-37 S. 17TH STREET

PHILADELPHIA, PA



## RENDERINGS



### RSA-5

**Permitted Building Type:** Detached; Semi-Detached; Attached

**Uses permitted as of right:** Single-Family; Passive Recreation; Family Day Care; Religious Assembly; Safety Services; Transit Station; Community Garden; Market or Community-Supported Farm

**Uses requiring special exception approval:** Group Living; Personal Care Home; Active Recreation; Group Day Care; Educational Facilities; Fraternal Organization; Hospital; Libraries and Cultural Exhibits; Utilities and Services, basic; Wireless Service Facility

**PLEASE CONTACT:**

**Gregory R. Bianchi**  
 Vice President  
 T. 215-701-3840  
 gbianchi@eusrealty.com

**EUSREALTY**  
 ASSOCIATES, INC.  
 A Full Service Real Estate Company

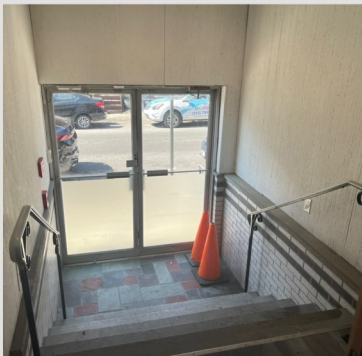
120-124 E. Lancaster Avenue - Suite 101 - Ardmore - PA - 19003

T.215-557-9900 F.215-701-3839

www.eusrealty.com

# 2135-37 S. 17TH STREET

PHILADELPHIA, PA



**PLEASE CONTACT:**

**Gregory R. Bianchi**  
Vice President  
T. 215-701-3840  
gbianchi@eusrealty.com

**EUSREALTY**  
ASSOCIATES, INC.  
A Full Service Real Estate Company

120-124 E. Lancaster Avenue - Suite 101 - Ardmore - PA - 19003

T.215-557-9900 F.215-701-3839

[www.eusrealty.com](http://www.eusrealty.com)