

HILLTOWN PLAZA

ROUTE 309 & ROUTE 113
SOUDERTON (BUCKS COUNTY), PA

FROM 1,200 TO 12,215 SQUARE FEET AVAILABLE



1,200 SF SUPERCUTS AVAILABLE FOR LEASE

LOCATION

ROUTE 309 & ROUTE 113
SOUDERTON (BUCKS COUNTY), PA

PROPERTY HIGHLIGHTS

- 1,200 - 12,215 SF Available - Will Divide
- Located in 330,000 SF Community Shopping Center Anchored by a Highly Successful 75,000 SF Giant Supermarket with Sales in Excess of \$50M.
- Shadow Anchored by Home Depot
- Excellent Exposure on Highly Traveled Route 309 & Route 113
- Key Tenants: Giant Food Store, Giant Fuel, Home Depot (Shadow Anchor), Staples, Advanced Auto, Rite Aid, Mattress Firm, PA Wine & Spirits, Cellstar Wireless & Wendy's



PLEASE CONTACT:

Michele Grasso
Managing Director
T. 215-701-3818
michelegrasso@eusrealty.com

Gregory R. Bianchi
Vice President
T. 215-701-3840
gbianchi@eusrealty.com

Brandon Blue
Sales Associate
T. 215-501-7305
bblue@eusrealty.com

LEASED BY:

EUSREALTY
ASSOCIATES, INC.

A Full Service Real Estate Company

DEVELOPED BY:



120-124 E. Lancaster Avenue - Suite 101 - Ardmore - PA - 19003

T. 215-557-9900 F. 215-701-3839

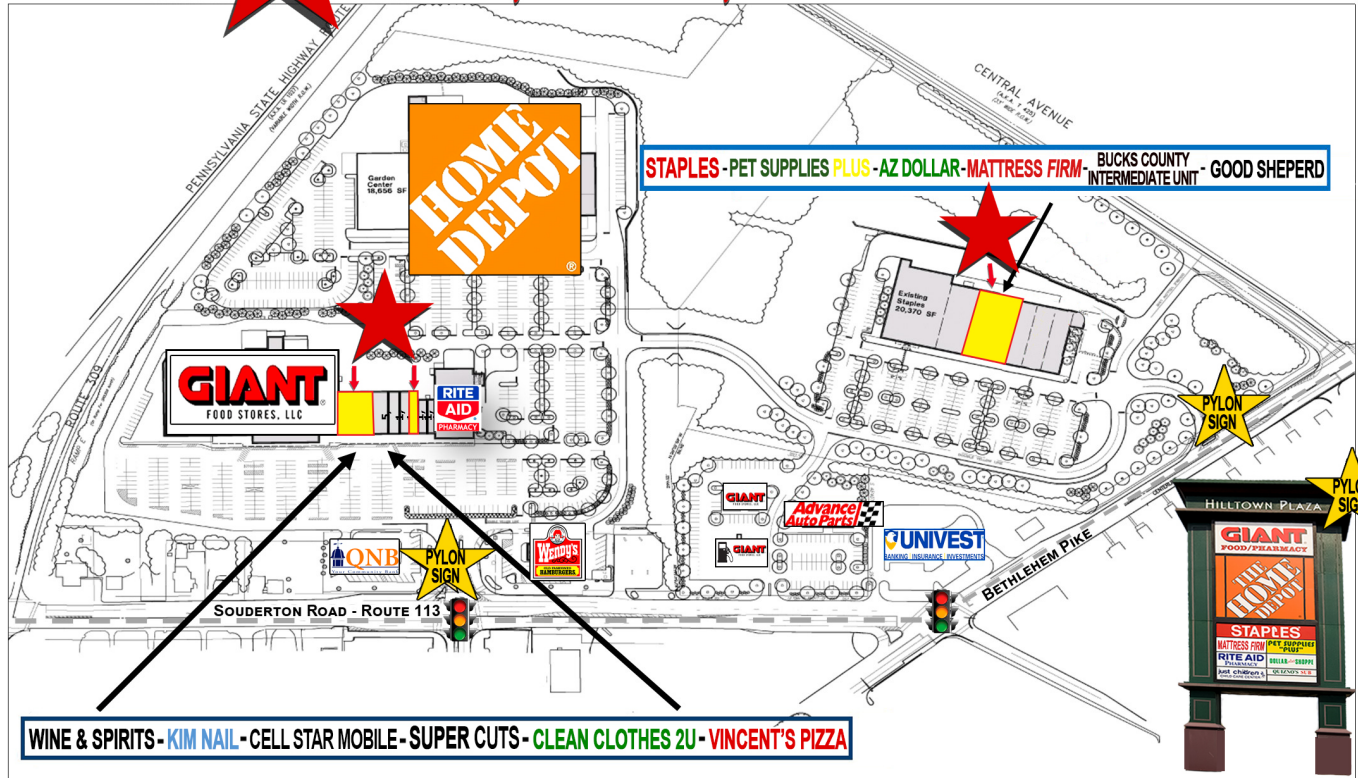
www.eusrealty.com

HILLTOWN PLAZA

ROUTE 309 & ROUTE 113
SOUDERTON (BUCKS COUNTY), PA

HILLTOWN PLAZA

FROM 1,200 TO 12,215 SQUARE FEET AVAILABLE



DEMOGRAPHIC OVERVIEW REPORT

POPULATION	1 MILE	3 MILE	5 MILE
2027 PROJECTION:	8,370	45,255	105,005
2022 ESTIMATE:	8,121	44,145	102,347
POP GROWTH 2022-2027:	3.07%	2.45%	2.60%
HOUSEHOLDS			
2027 PROJECTION:	3,404	17,319	39,658

PLEASE CONTACT:

Gregory R. Bianchi
Vice President
T. 215-701-3840
gbianchi@eusrealty.com

Michele Grasso
Managing Director
T. 215-701-3818
michelegrasso@eusrealty.com

Brandon Blue
Sales Associate
T. 215-501-7305
bblue@eusrealty.com

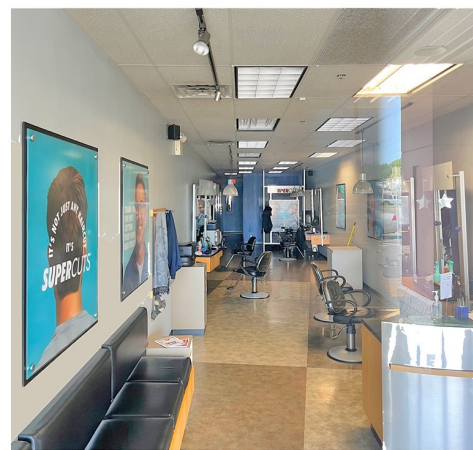
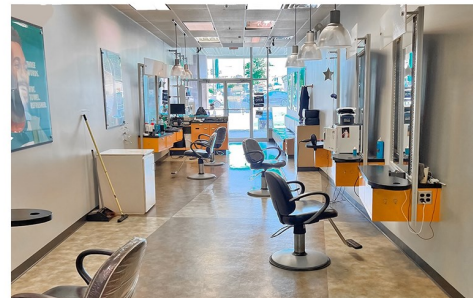
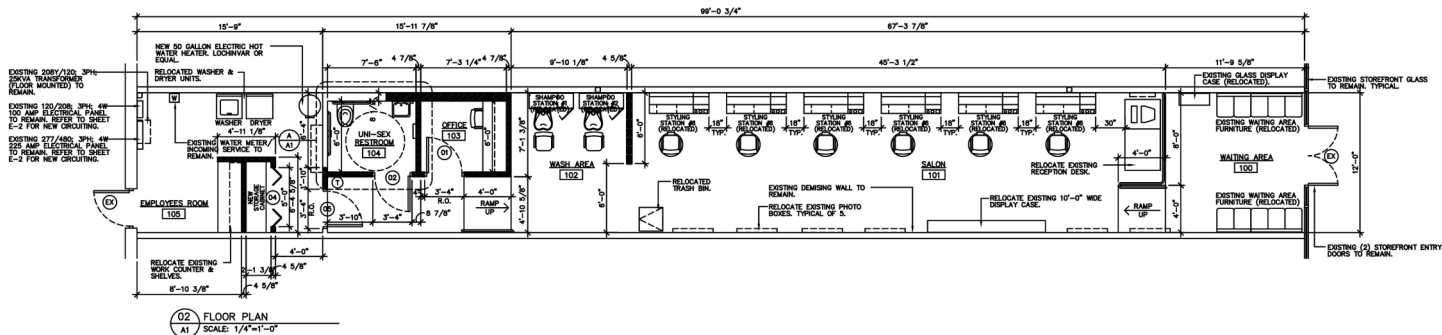
LEASED BY:

USREALTY
ASSOCIATES, INC.
A Full Service Real Estate Company

DEVELOPED BY:



120-124 E. Lancaster Avenue - Suite 101 - Ardmore - PA - 19003
T. 215-557-9900 F. 215-701-3839
www.eusrealty.com



PLEASE CONTACT:

Gregory R. Bianchi
Vice President
T. 215-701-3840
gbianchi@eusrealty.com

Michele Grasso
Managing Director
T. 215-701-3818
michelegrasso@eusrealty.com

Brandon Blue
Sales Associate
T. 215-501-7305
bblue@eusrealty.com

LEASED BY:

USREALTY
ASSOCIATES, INC.

A Full Service Real Estate Company

DEVELOPED BY:



120-124 E. Lancaster Avenue - Suite 101 - Ardmore - PA - 19003

T.215-557-9900 F.215-701-3839

www.eusrealty.com

The forgoing information was furnished by sources deemed reliable, but no warranty or representation as to its accuracy.
Subject to errors, omission, changes of price, prior sale or withdrawal from market without notice.