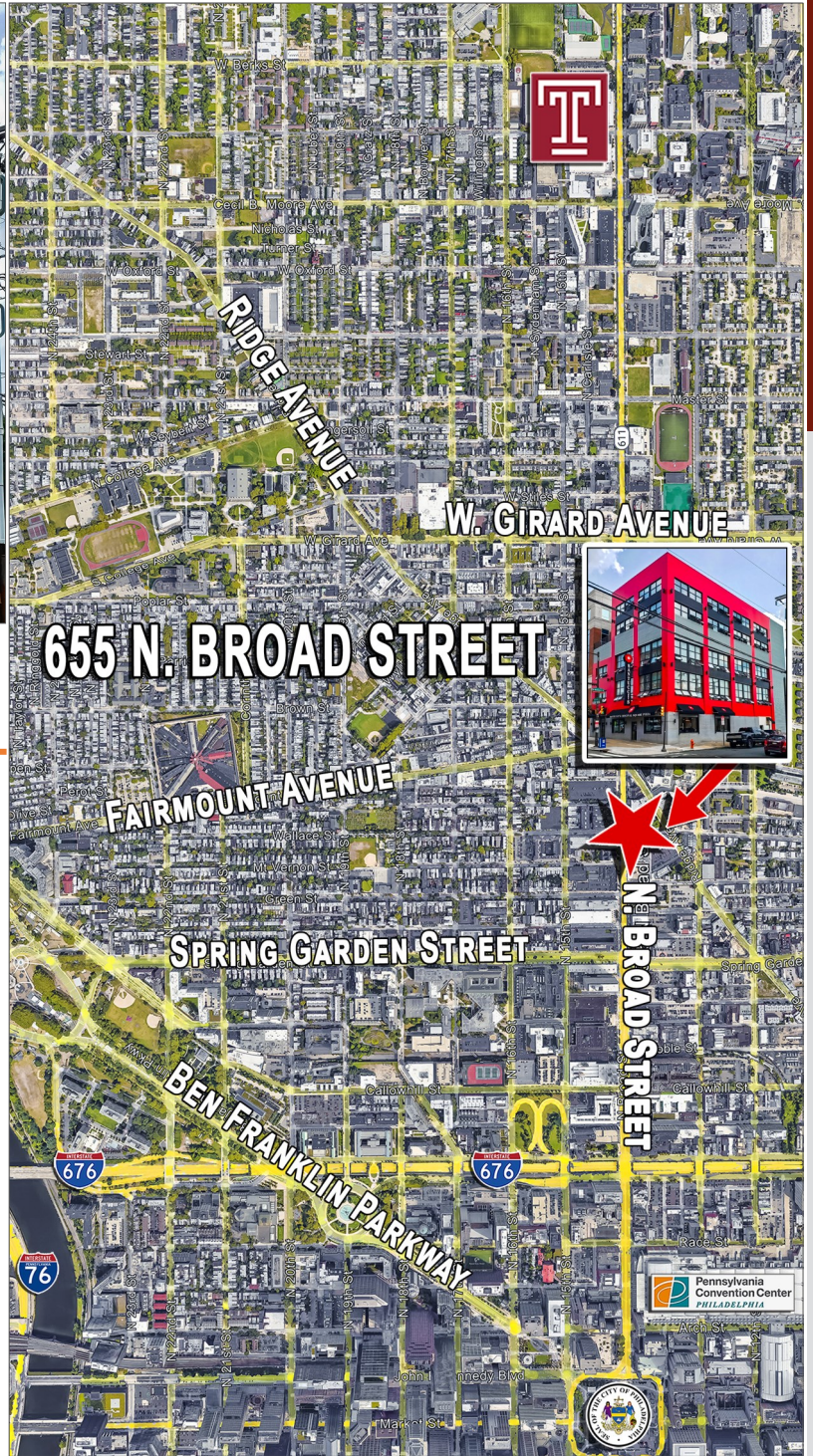


**655 N. BROAD STREET**  
**(BROAD & WALLACE)**  
**PHILADELPHIA, PA**



**SPACE AVAILABLE**  
**FOR LEASE**

**LOCATION**

655 N. Broad Street (Broad and Wallace)  
Philadelphia, PA

**PROPERTY HIGHLIGHTS**

- Approximately 2,500 +/- Square Feet of Lower Level Space Available
- Located in the Densely Populated Section of Spring Garden/Fairmount Neighborhood of Philadelphia
- Zoned: CMX-4
- Experience the North Broad Street Renaissance at this Prime Location
- Exterior Building Signage Available

**PLEASE CONTACT:**

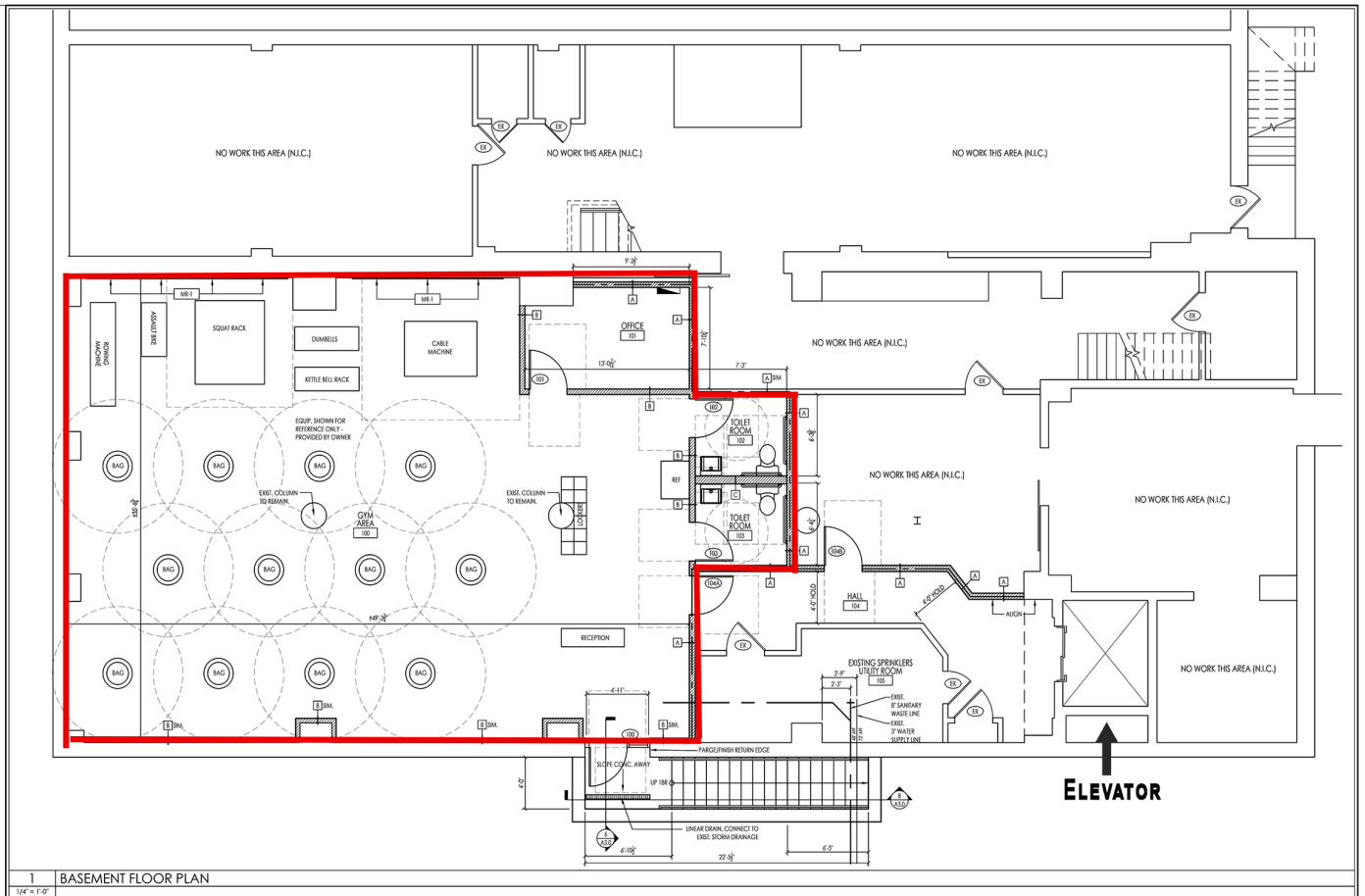
**Gregory R. Bianchi**  
Vice President  
T. 215-701-3840  
gbianchi@eusrealty.com



120-124 E. Lancaster Avenue - Suite 101 - Ardmore - PA - 19003  
T.215-557-9900 F.215-701-3839  
www.eusrealty.com



# 655 N. BROAD STREET (BROAD & WALLACE) PHILADELPHIA, PA



**PLEASE CONTACT:**

**Gregory R. Bianchi**  
Vice President  
T. 215-701-3840  
gbianchi@eusrealty.com

**EUSREALTY**  
ASSOCIATES, INC.  
A Full Service Real Estate Company

120-124 E. Lancaster Avenue - Suite 101 - Ardmore - PA - 19003

T. 215-557-9900 F. 215-701-3839

www.eusrealty.com