

# 130 E. LANCASTER AVENUE (RT. 30) ARDMORE (MONTGOMERY COUNTY), PA



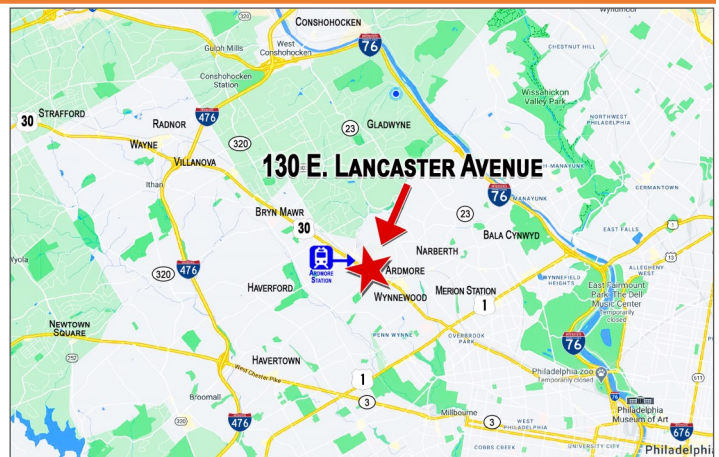
## RETAIL/OFFICE AVAILABLE FOR LEASE

### LOCATION

130 E. Lancaster Avenue  
Ardmore (Montgomery County), PA

### PROPERTY HIGHLIGHTS

- **Approximately 3,200 Square Feet Available**
- **Parking: Approximately 4 Spaces**
- **Located on Lancaster Avenue in Ardmore's Commercial District Along the Historic Main Line in Montgomery County**
- **Lancaster Avenue (Route. 30): 14,304 VPD**



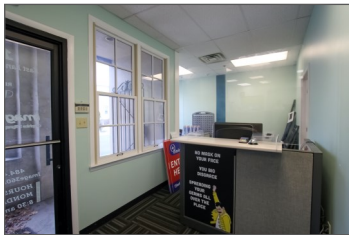
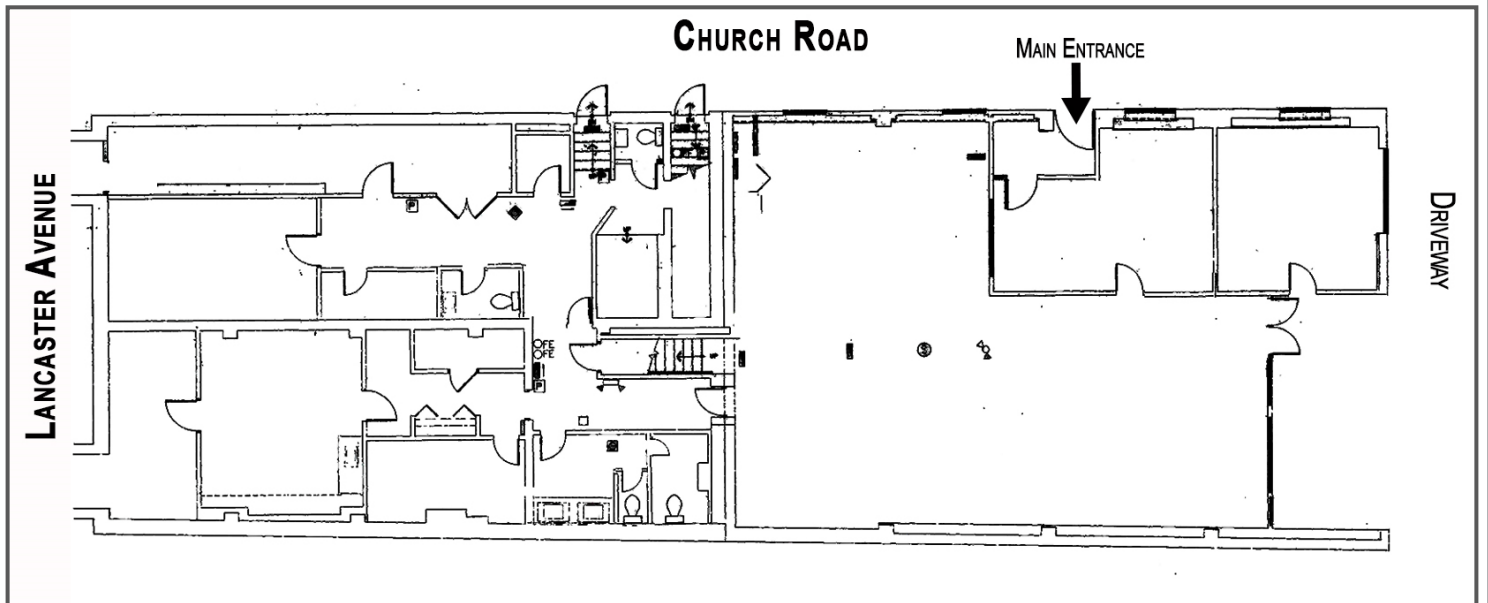
### PLEASE CONTACT:

**Michele Grasso**  
Managing Director  
T. 215-701-3818  
michelegrasso@eusrealty.com

**EUSREALTY**  
ASSOCIATES, INC.  
A Full Service Real Estate Company

120-124 E. Lancaster Avenue - Suite 101 - Ardmore - PA - 19003  
T.215-557-9900 F.215-701-3839  
www.eusrealty.com

# 130 E. LANCASTER AVENUE (RT. 30) ARDMORE (MONTGOMERY COUNTY), PA



**PLEASE CONTACT:** Michele Grasso  
 Managing Director  
 T. 215-701-3818  
 michelegrasso@eusrealty.com

**EUSREALTY**  
 ASSOCIATES, INC.  
 A Full Service Real Estate Company

120-124 E. Lancaster Avenue - Suite 101 - Ardmore - PA - 19003  
 T.215-557-9900 F.215-701-3839  
[www.eusrealty.com](http://www.eusrealty.com)