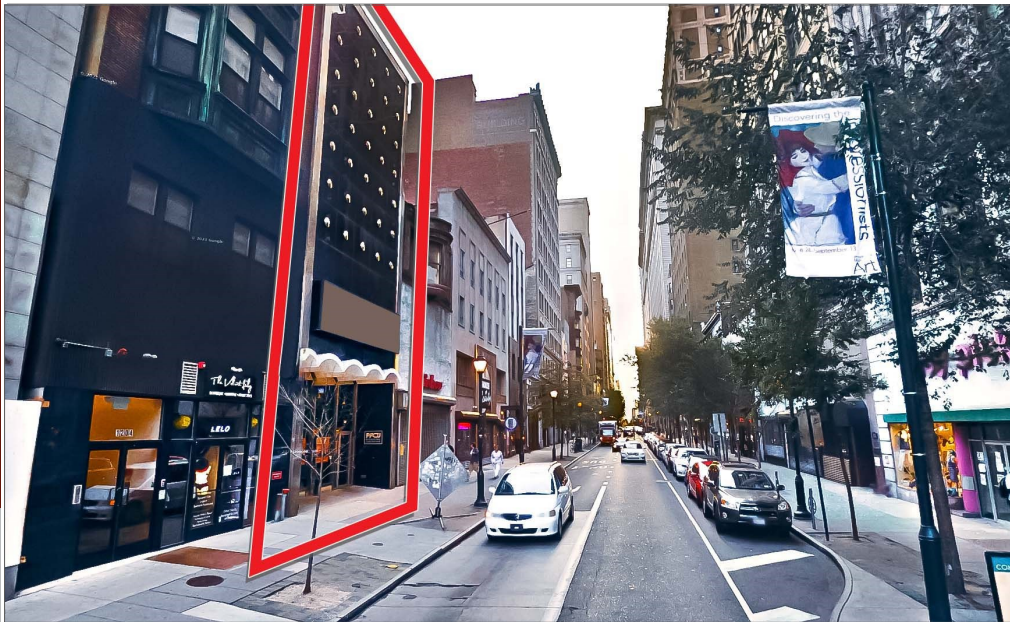


1206 CHESTNUT STREET

MIDTOWN VILLAGE - PHILADELPHIA, PA



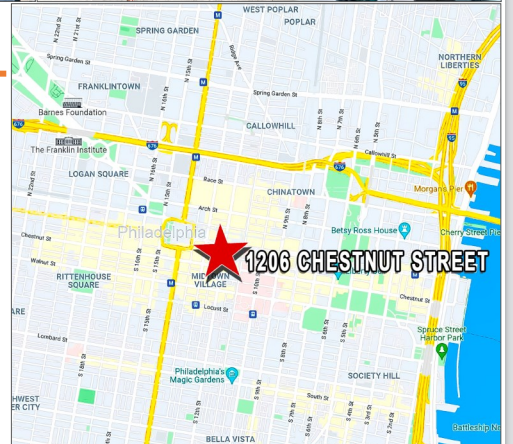
FOR SALE OR LEASE

LOCATION

1206 Chestnut Street
Midtown Village - Philadelphia, PA

PROPERTY HIGHLIGHTS

- 4 Story Development Opportunity
- 13,056 Square Foot Building
- Typical Floor: 3,264 Square Feet
- Zoning: CMX-5
- 24 Feet of Frontage on Chestnut Street
- Retail/Office Store Front Available
- Walk Score: 100 - Transit Score: 100
- Close Proximity to New Jefferson Health \$762M Specialty Care Pavilion
- Taxes: \$46,049.00 (2023)



PLEASE CONTACT:

Gregory R. Bianchi

Vice President

T. 215-701-3840

gbianchi@eusrealty.com

EUSREALTY
ASSOCIATES, INC.
A Full Service Real Estate Company

120-124 E. Lancaster Avenue - Suite 101 - Ardmore - PA - 19003

T. 215-557-9900 F. 215-701-3839

www.eusrealty.com