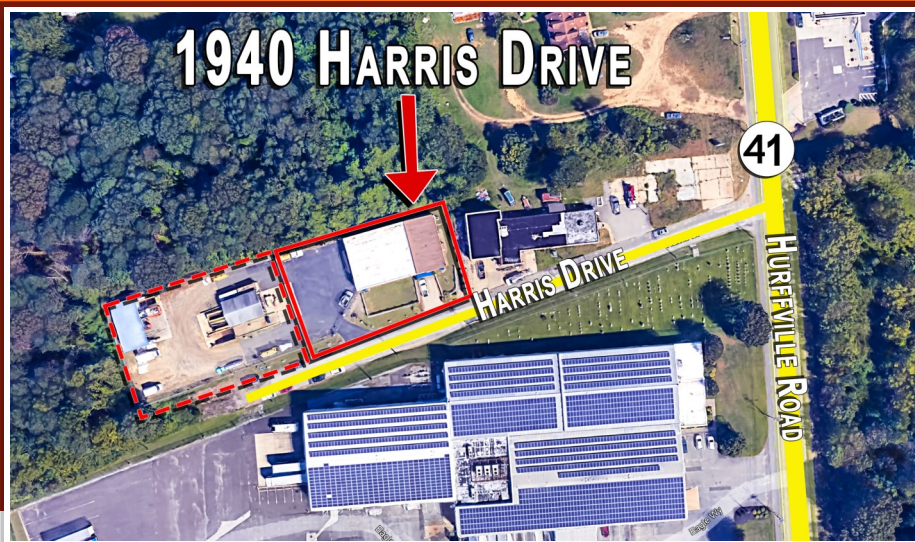


1940 HARRIS DRIVE

DEPTFORD, NJ (GLOUCESTER COUNTY)



AVAILABLE FOR LEASE

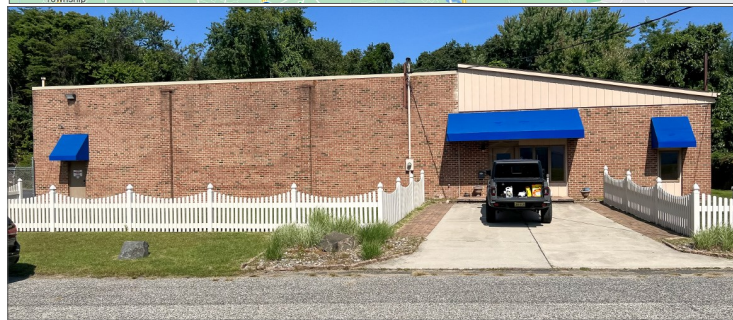
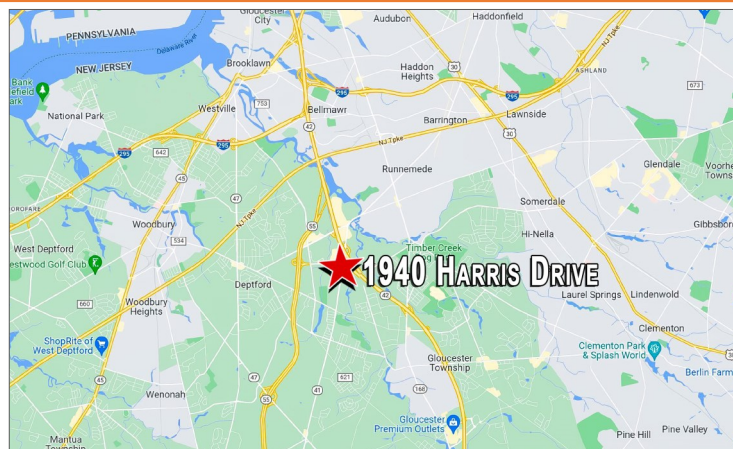
5,488 +/- SQUARE FEET
IDEAL FOR WAREHOUSE, FLEX AND OFFICE

LOCATION

1940 Harris Drive
Deptford (Gloucester County), NJ

PROPERTY HIGHLIGHTS

- **3,528 SF WAREHOUSE/1,960 SF OFFICE**
- 6,000 SF Outdoor Area Paved
- Freestanding Building
- Clear (15' Approx.) Ceiling Height (Warehouse)
- Adequate Electric Service
- Drive-in Doors (4)
- Zoning: R-10A
- 1/2 Mile from North South Freeway Route 42



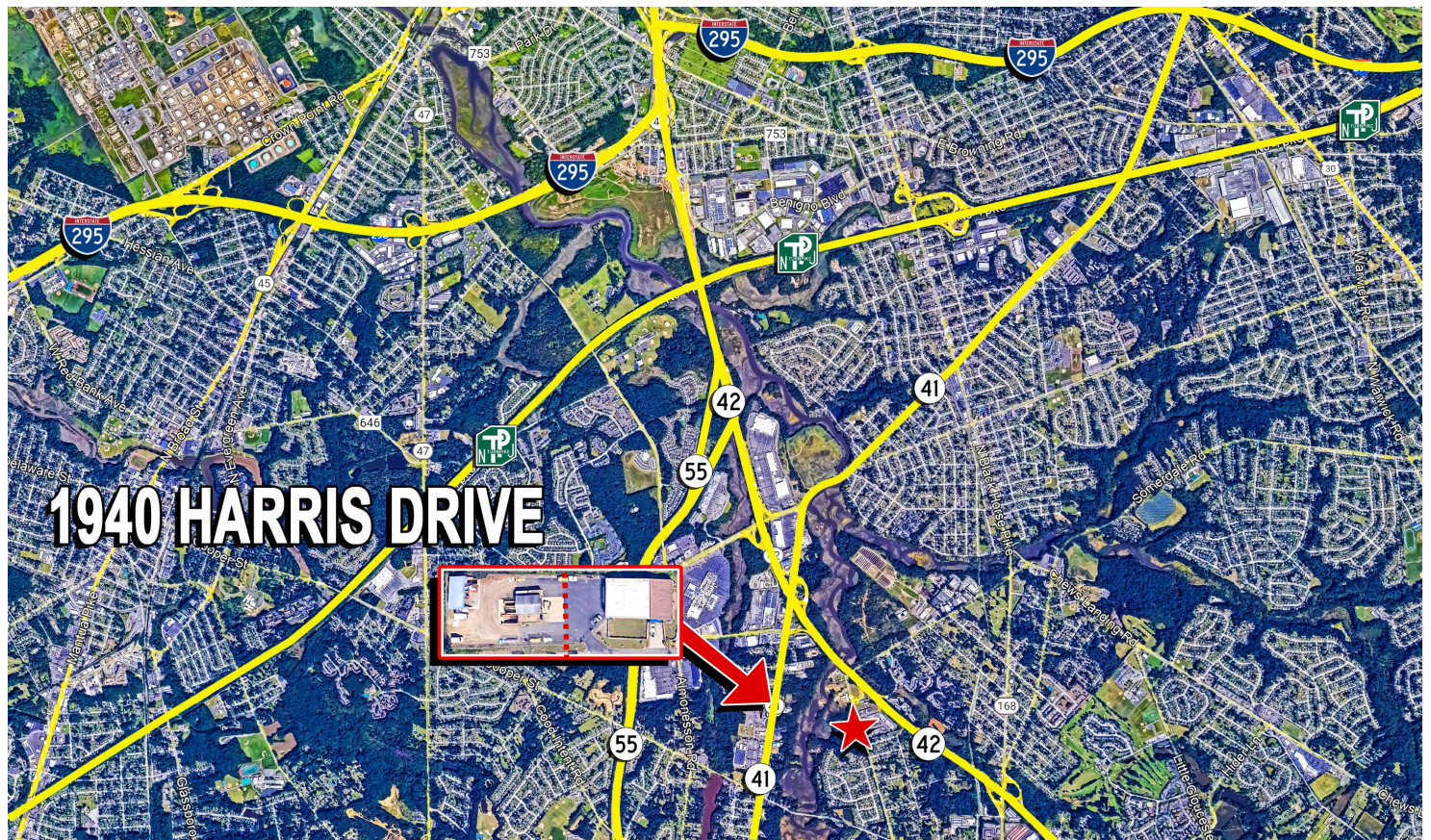
PLEASE CONTACT: Gregory R. Bianchi
Vice President
T. 215-701-3840
gbianchi@eusrealty.com

EUSREALTY
ASSOCIATES, INC.
A Full Service Real Estate Company

120-124 E. Lancaster Avenue - Suite 101 - Ardmore - PA - 19003
T. 215-557-9900 F. 215-701-3839
www.eusrealty.com

1940 HARRIS DRIVE

DEPTFORD, NJ (GLOUCESTER COUNTY)



CONTACT: Gregory R. Bianchi

Vice President

T. 215-701-3840

gbianchi@eusrealty.com

USREALTY
ASSOCIATES, INC.

A Full Service Real Estate Company

120-124 E. Lancaster Avenue - Suite 101 - Ardmore - PA - 19003

T. 215-557-9900 F. 215-701-3839

www.eusrealty.com

The foregoing information was furnished by sources deemed reliable, but no warranty or representation as to its accuracy.
Subject to errors, omission, changes of price, prior sale or withdrawal from market without notice.