

ASHBRIDGE COMMONS

ROUTE 30 & ROUTE 30 BYPASS
DOWNTOWNTOWN (CHESTER COUNTY), PA



AVAILABLE - FOR LEASE

LOCATION

Route 30 & Route 30 Bypass
Downtown (Chester County), PA

PROPERTY HIGHLIGHTS

- Available - 10,267 SF (May be Increased to 17,500 SF)
- Outdoor Play Area
- Ample on Site Parking
- Adjoining 360,000 SF Home Depot Anchored Ashbridge Square & 123 Unit Ashbridge Manor Senior Living Community
- Across from 750,000 SF Wegman's Anchored Brandywine Center
- Route 30 Bypass: 51,894 VPD
- Business Route 30: 21,370 VPD



PLEASE CONTACT:

Michele Grasso
Managing Director
T. 215-701-3818
michelegrasso@eusrealty.com

Brandon Blue
Sales Associate
T. 215-501-7305
bblue@eusrealty.com

LEASED BY:

EUSREALTY
ASSOCIATES, INC.
A Full Service Real Estate Company

DEVELOPED BY:



120-124 E. Lancaster Avenue - Suite 101 - Ardmore - PA - 19003
T.215-557-9900 F.215-701-3839
www.eusrealty.com

The forgoing information was furnished by sources deemed reliable, but no warranty or representation as to its accuracy.
Subject to errors, omission, changes of price, prior sale or withdrawal from market without notice.

ASHBRIDGE COMMONS

ROUTE 30 & ROUTE 30 BYPASS
DOWNTOWN (CHESTER COUNTY), PA



DEMOGRAPHIC OVERVIEW REPORT

	1 MILE	3 MILE	5 MILE
2027 PROJECTED POPULATION	5,907	44,013	100,609
2022 ESTIMATED POPULATION	5,721	42,576	97,234
2022 AVG. HOUSEHOLD INCOME	\$122,164	\$136,944	\$147,844
HH ANNUAL GROWTH 2022-2027	3.23%	3.40%	3.44%

PLEASE CONTACT:

Michele Grasso
Managing Director
T. 215-701-3818
michelegrasso@eusrealty.com

Brandon Blue
Sales Associate
T. 215-501-7305
bblue@eusrealty.com

LEASED BY:

USREALTY
ASSOCIATES, INC.
A Full Service Real Estate Company

DEVELOPED BY:



120-124 E. Lancaster Avenue - Suite 101 - Ardmore - PA - 19003
T.215-557-9900 F.215-701-3839
www.eusrealty.com

ASHBRIDGE COMMONS

ROUTE 30 & ROUTE 30 BYPASS
DOWNINGTOWN (CHESTER COUNTY), PA



PLEASE CONTACT:

Michele Grasso
Managing Director
T. 215-701-3818
michelegrasso@eusrealty.com

Brandon Blue
Sales Associate
T. 215-501-7305
bblue@eusrealty.com

LEASED BY:

USREALTY
ASSOCIATES, INC.
A Full Service Real Estate Company

DEVELOPED BY:



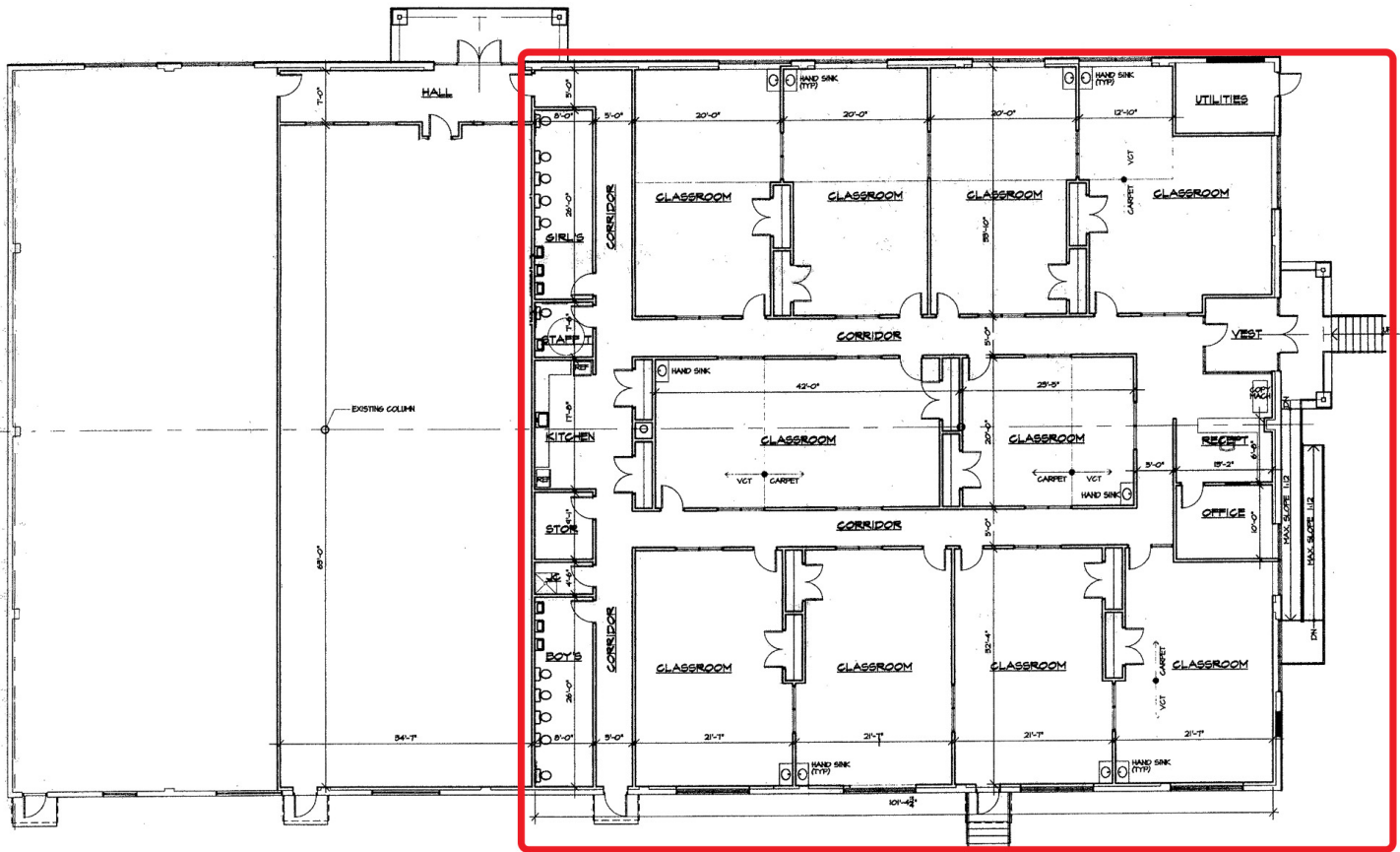
120-124 E. Lancaster Avenue - Suite 101 - Ardmore - PA - 19003
T.215-557-9900 F.215-701-3839
www.eusrealty.com

The forgoing information was furnished by sources deemed reliable, but no warranty or representation as to its accuracy.
Subject to errors, omission, changes of price, prior sale or withdrawal from market without notice.

ASHBRIDGE COMMONS

ROUTE 30 & ROUTE 30 BYPASS
DOWNTOWNTOWN (CHESTER COUNTY), PA

AVAILABLE 10,267 SF



PLEASE CONTACT:

Michele Grasso
Managing Director
T. 215-701-3818
michelegrasso@eusrealty.com

Brandon Blue
Sales Associate
T. 215-501-7305
bblue@eusrealty.com

LEASED BY:

USREALTY
ASSOCIATES, INC.
A Full Service Real Estate Company

DEVELOPED BY:



120-124 E. Lancaster Avenue - Suite 101 - Ardmore - PA - 19003
T.215-557-9900 F.215-701-3839
www.eusrealty.com

The forgoing information was furnished by sources deemed reliable, but no warranty or representation as to its accuracy.
Subject to errors, omission, changes of price, prior sale or withdrawal from market without notice.