

ASHBRIDGE COMMONS

ROUTE 30 & ROUTE 30 BYPASS
DOWNTOWNTOWN (CHESTER COUNTY), PA



2 AVAILABILITIES - FOR LEASE

LOCATION

Route 30 & Route 30 Bypass
Downtown (Chester County), PA

PROPERTY HIGHLIGHTS

- 2,250 SF - Hair Salon Available
- 3,355 SF Available
- Ample on Site Parking
- Adjoining 360,000 SF Home Depot Anchored Ashbridge Square & 123 Unit Ashbridge Manor Senior Living Community
- Across from 750,000 SF Wegman's Anchored Brandywine Center
- Route 30 Bypass: 51,894 VPD
- Business Route 30: 19,148 VPD

AVAILABLE 2,250 SQUARE FEET



AVAILABLE 3,355 SQUARE FEET



PLEASE CONTACT:

Michele Grasso
Managing Director
T. 215-701-3818
michelegrasso@eusrealty.com

Brandon Blue
Sales Associate
T. 215-501-7305
bblue@eusrealty.com

LEASED BY:

USREALTY
ASSOCIATES, INC.
A Full Service Real Estate Company

DEVELOPED BY:



120-124 E. Lancaster Avenue - Suite 101 - Ardmore - PA - 19003

T. 215-557-9900 F. 215-701-3839

www.eusrealty.com

ASHBRIDGE COMMONS

ROUTE 30 & ROUTE 30 BYPASS
DOWNINGTOWN (CHESTER COUNTY), PA



DEMOGRAPHIC OVERVIEW REPORT

	1 MILE	3 MILE	5 MILE
2016 PROJECTED POPULATION	5,917	41,182	97,044
2021 ESTIMATED POPULATION	5,799	40,421	95,047
2021 AVG. HOUSEHOLD INCOME	\$123,760	\$137,392	\$147,151
HH ANNUAL GROWTH 2021-2026	0.4%	0.4%	0.4%

PLEASE CONTACT:

Michele Grasso
Managing Director
T. 215-701-3818
michelegrasso@eusrealty.com

Brandon Blue
Sales Associate
T. 215-501-7305
bblue@eusrealty.com

LEASED BY:

USREALTY
ASSOCIATES, INC.
A Full Service Real Estate Company

DEVELOPED BY:



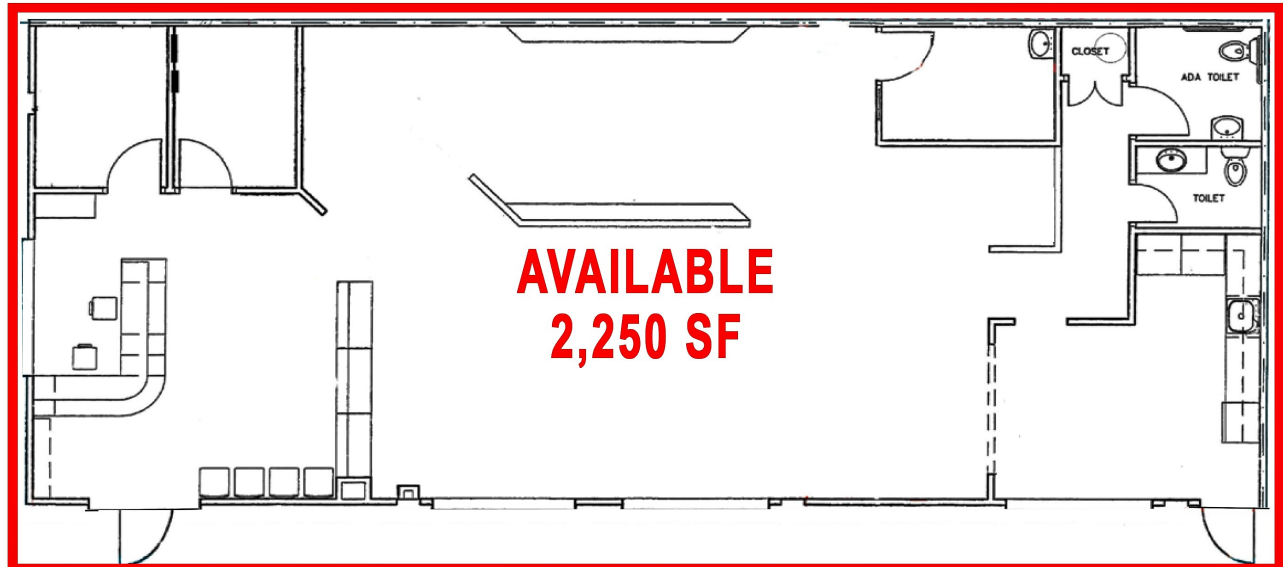
120-124 E. Lancaster Avenue - Suite 101 - Ardmore - PA - 19003
T. 215-557-9900 F. 215-701-3839
www.eusrealty.com

ASHBRIDGE COMMONS

ROUTE 30 & ROUTE 30 BYPASS
DOWNINGTOWN (CHESTER COUNTY), PA



HAIR SALON



PLEASE CONTACT:

Michele Grasso
Managing Director
T. 215-701-3818
michelegrasso@eusrealty.com

Brandon Blue
Sales Associate
T. 215-501-7305
bblue@eusrealty.com

LEASED BY:

EUSREALTY
ASSOCIATES, INC.
A Full Service Real Estate Company

DEVELOPED BY:



120-124 E. Lancaster Avenue - Suite 101 - Ardmore - PA - 19003
T.215-557-9900 F.215-701-3839
www.eusrealty.com