

511 CONDOMINIUM

511 N. BROAD STREET (BROAD & SPRING GARDEN STREETS)
PHILADELPHIA, PA

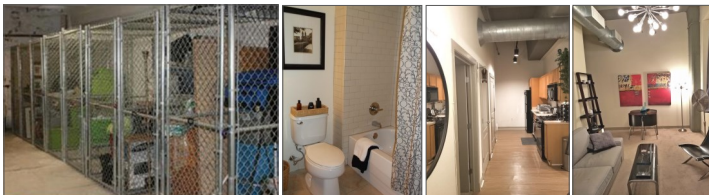
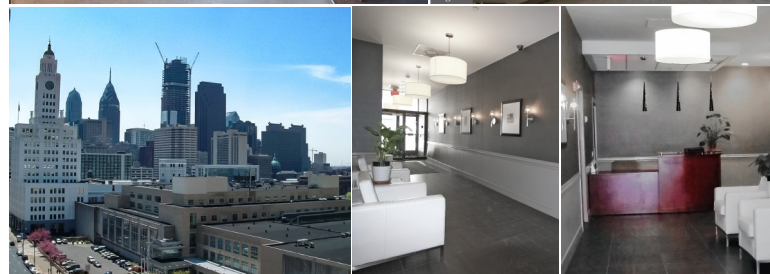


LOCATION

511 N. Broad Street
Philadelphia, PA

PROPERTY HIGHLIGHTS

- 5 - 1 Bedroom/1 Bathroom Condominium's - From 689 - 746 Square Feet
- 14' Ceiling Heights, Exposed Beams & Ductwork
- Oversized Windows with Spectacular Views
- Open Kitchen's with Breakfast Bars
- Washer and Dryer Hook-Ups in Every Unit
- Individual Securable Storage Unit on Lower Level
- On the Avenue Of the Arts & Close to Restaurants, Shopping, Parks & Museums!
- Easy Access to I-76 & I-95, Public Transportation & Parking Steps Away.



PLEASE CONTACT:

Michele Grasso

Managing Director

T. 215-701-3818

michelegrasso@eusrealty.com

EUSREALTY
ASSOCIATES, INC.

A Full Service Real Estate Company

120-124 E. Lancaster Avenue - Suite 101
Ardmore - PA - 19003
T. 215-557-9900 F. 215-701-3839
www.eusrealty.com