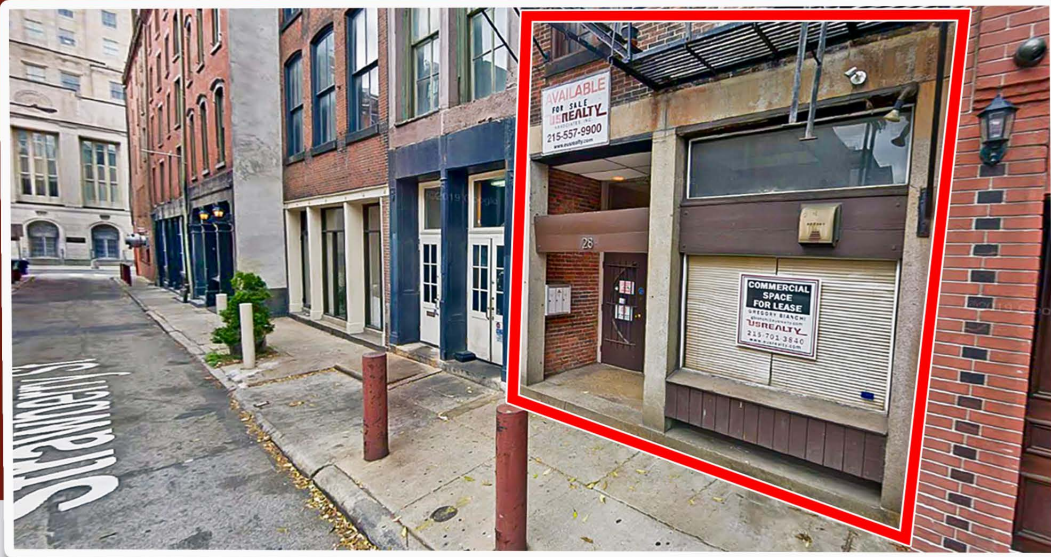


# 28 S. STRAWBERRY STREET

BETWEEN MARKET & CHESTNUT STREETS - OLD CITY - PHILADELPHIA, PA



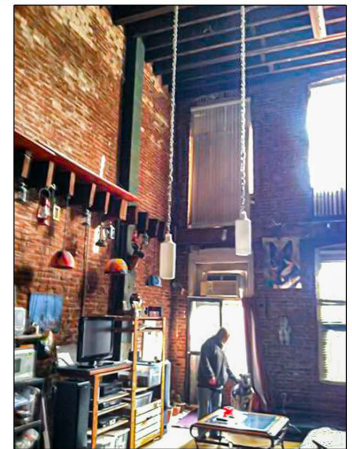
**FOR SALE**  
**SALE PRICE - \$1.3 MILLION**

## LOCATION

28 S. Strawberry Street  
Old City - Philadelphia - PA

## PROPERTY HIGHLIGHTS

- Building Size 5,610 SF
- Multi-Story Building
- 1,200 +/- SF on Street level Retail
- Residential Units on Upper Floors
- Exposure from 2nd Street
- Close Proximity to SEPTA Routes & all Major Highways
- Parking Across the Street (Pay to Park)
- Less than 1 Mile from Ben Franklin Bridge
- Taxes \$13,998 (2021)
- Zoning: CMX-3



## PLEASE CONTACT:

**Gregory R. Bianchi**

Vice President

T. 215-701-3840

gbianchi@eusrealty.com

**EUSREALTY**  
ASSOCIATES, INC.  
A Full Service Real Estate Company

120-124 E. Lancaster Avenue - Suite 101 - Ardmore - PA - 19003

T. 215-557-9900 F. 215-701-3839

[www.eusrealty.com](http://www.eusrealty.com)