

130 E. LANCASTER AVENUE (RT. 30) ARDMORE (MONTGOMERY COUNTY), PA



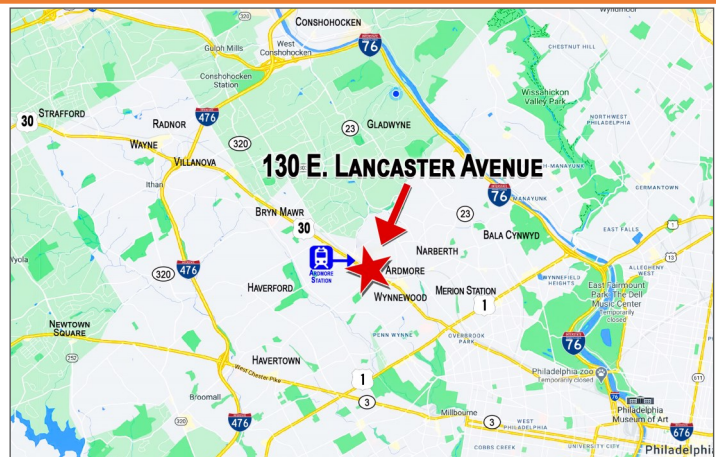
RETAIL/OFFICE AVAILABLE FOR LEASE

LOCATION

130 E. Lancaster Avenue
Ardmore (Montgomery County), PA

PROPERTY HIGHLIGHTS

- **Approximately 3,200 Square Feet Available**
- **Parking: Approximately 4 Spaces**
- **Located on Lancaster Avenue in Ardmore's Commercial District Along the Historic Main Line in Montgomery County**
- **Lancaster Avenue (Route. 30): 14,304 VPD**



PLEASE CONTACT:

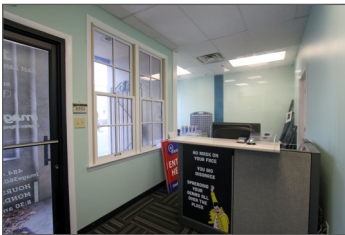
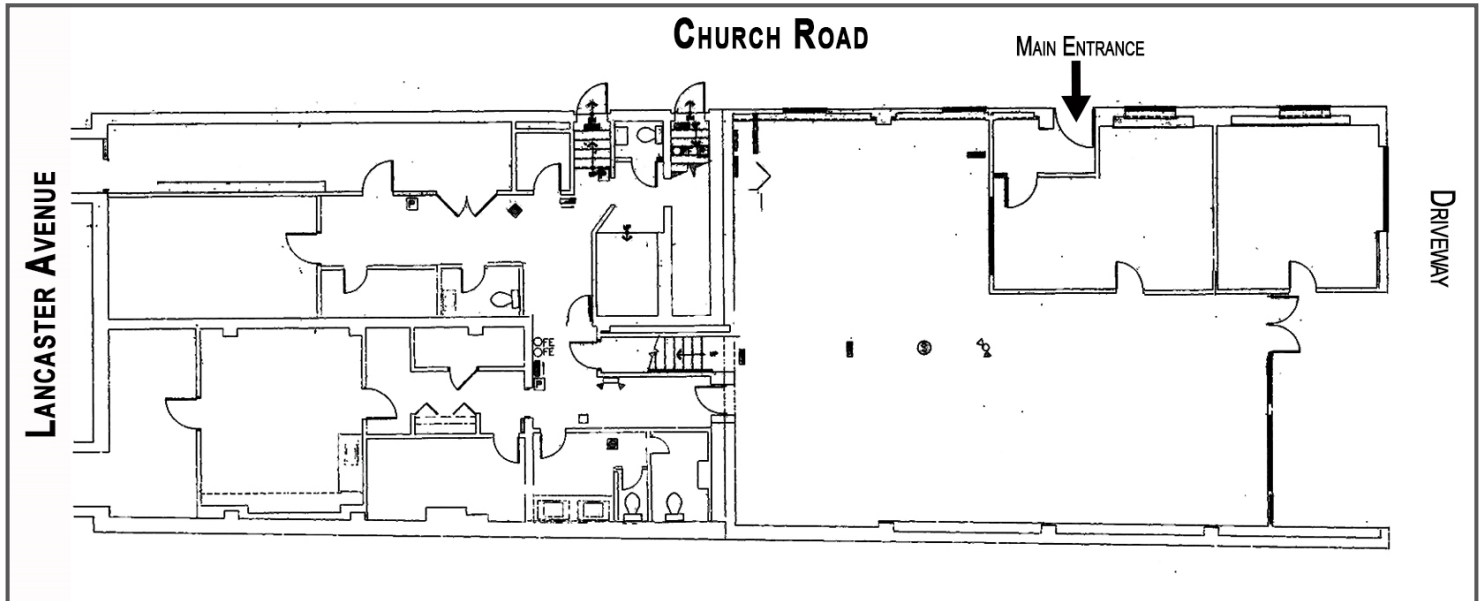
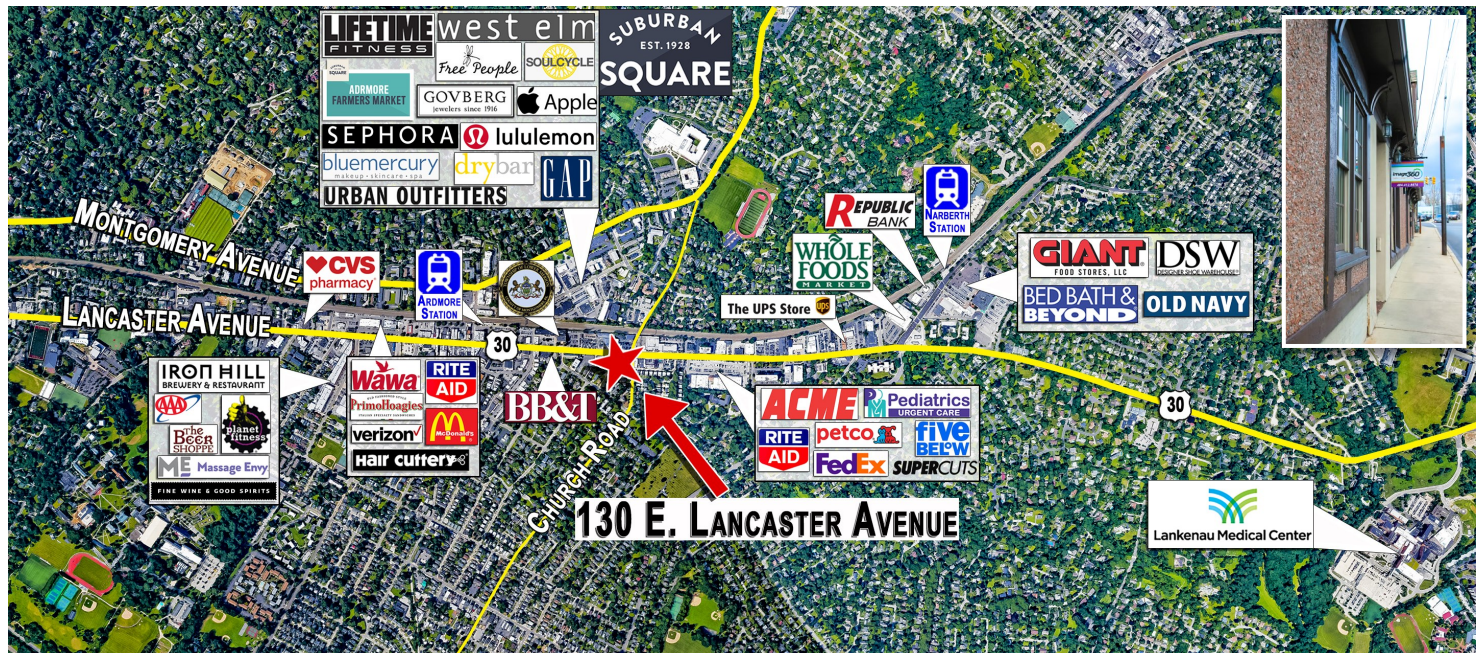
Michele Grasso
Managing Director
T. 215-701-3818
michelegrasso@eusrealty.com

EUSREALTY
ASSOCIATES, INC.
A Full Service Real Estate Company

120-124 E. Lancaster Avenue - Suite 101 - Ardmore - PA - 19003
T.215-557-9900 F.215-701-3839
www.eusrealty.com

130 E. LANCASTER AVENUE (RT. 30)

ARDMORE (MONTGOMERY COUNTY), PA



PLEASE CONTACT: Michele Grasso
 Managing Director
 T. 215-701-3818
michelegrasso@eusrealty.com

EUSREALTY
 ASSOCIATES, INC.
 A Full Service Real Estate Company

120-124 E. Lancaster Avenue - Suite 101 - Ardmore - PA - 19003
 T.215-557-9900 F.215-701-3839
www.eusrealty.com

The forgoing information was furnished by sources deemed reliable, but no warranty or representation as to its accuracy.
 Subject to errors, omission, changes of price, prior sale or withdrawal from market without notice.