

# AMERICAN HERITAGE FEDERAL CREDIT UNION PLAZA

280 N. WEST END BOULEVARD  
QUAKERTOWN (BUCKS COUNTY), PA



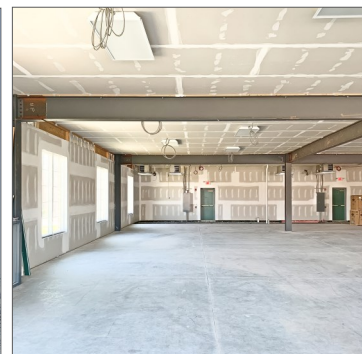
## RETAIL/OFFICE - FOR LEASE 4,674 SQUARE FEET - WILL DIVIDE

### LOCATION

280 N. West End Blvd. (Along Route 309)  
Quakertown (Bucks County), PA

### PROPERTY HIGHLIGHTS

- New Construction
- Join American Heritage Federal Credit Union
- From 2,337 to 4,674 Square Feet Available
- March 2020 Delivery
- Great Visibility From Route 309
- Traffic Counts: Route 309 (33,104 VPD)



### PLEASE CONTACT:

**Brandon Blue**  
Sales Associate  
T. 215-501-7305  
bblue@eusrealty.com

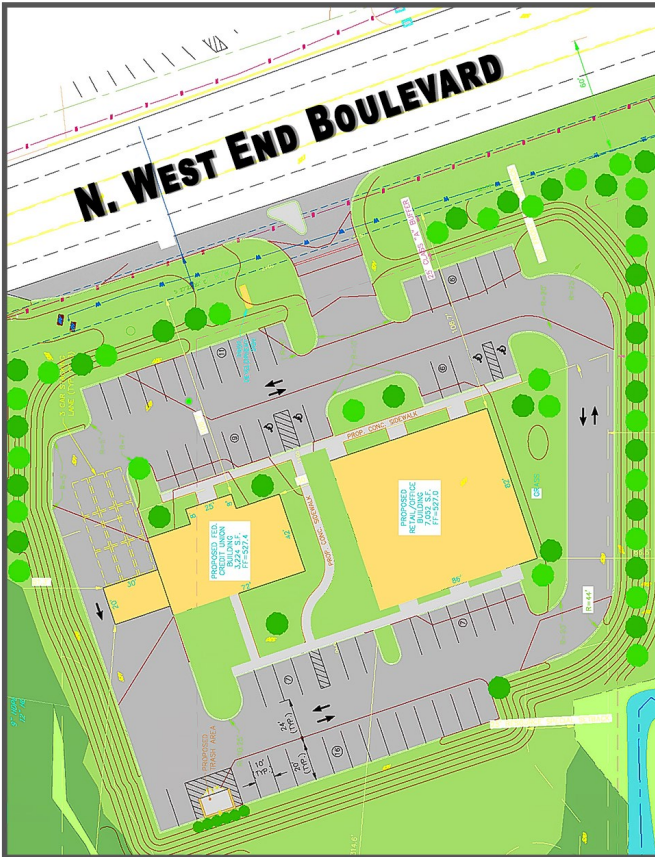
**EUSREALTY**  
ASSOCIATES, INC.  
A Full Service Real Estate Company

120-124 E. Lancaster Avenue - Suite 101 - Ardmore - PA - 19003  
T.215-557-9900 F.215-701-3839  
[www.eusrealty.com](http://www.eusrealty.com)

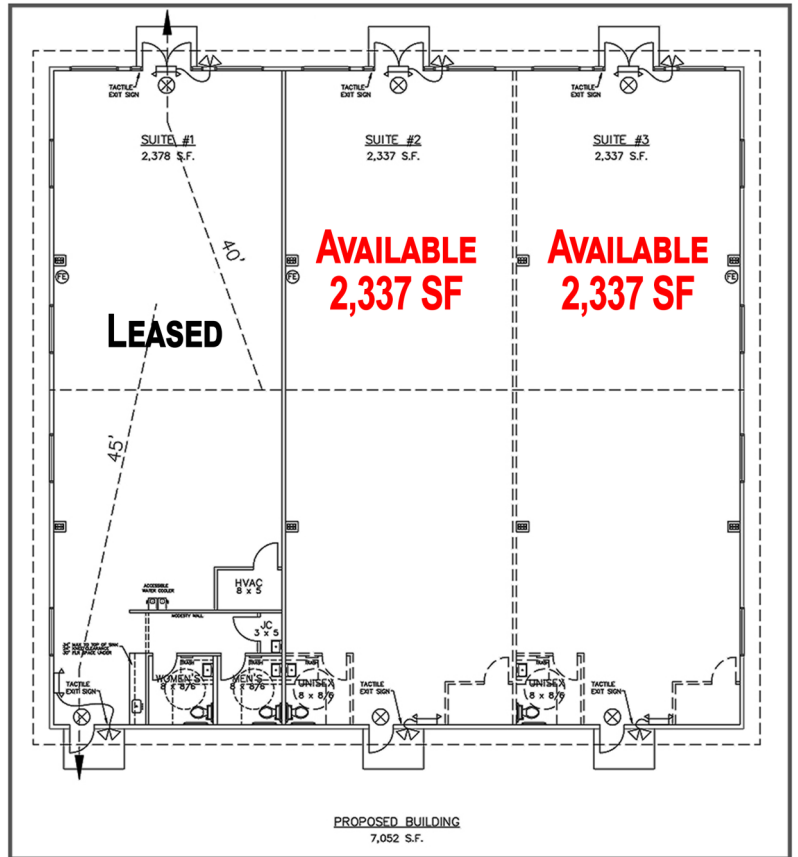
# AMERICAN HERITAGE FEDERAL CREDIT UNION PLAZA

280 N. WEST END BOULEVARD  
QUAKERTOWN (BUCKS COUNTY), PA

## SITE PLAN



## FLOOR PLAN



## DEMOGRAPHICS

Population	1 Mile	2 Mile	3 Mile
2019 Total Population:	4,585	17,672	28,268
2024 Population:	4,612	17,878	28,488
Pop Growth 2019-2024:	0.59%	1.17%	0.78%
Households			
2019 Total Households:	1,779	6,880	10,740
HH Growth 2019-2024:	0.62%	1.12%	0.74%
Median Household Inc:	\$57,393	\$64,042	\$67,982

### PLEASE CONTACT:

**Brandon Blue**  
Sales Associate  
T. 215-501-7305  
bblue@eusrealty.com

**USREALTY**  
ASSOCIATES, INC.  
A Full Service Real Estate Company

120-124 E. Lancaster Avenue - Suite 101 - Ardmore - PA - 19003

T.215-557-9900 F.215-701-3839

www.eusrealty.com



# AMERICAN HERITAGE FEDERAL CREDIT UNION PLAZA

280 N. WEST END BOULEVARD  
QUAKERTOWN (BUCKS COUNTY), PA



PLEASE CONTACT:

**Brandon Blue**  
Sales Associate  
T. 215-501-7305  
bblue@eusrealty.com

**USREALTY**  
ASSOCIATES, INC.  
A Full Service Real Estate Company

120-124 E. Lancaster Avenue - Suite 101 - Ardmore - PA - 19003  
T. 215-557-9900 F. 215-701-3839  
[www.eusrealty.com](http://www.eusrealty.com)

The forgoing information was furnished by sources deemed reliable, but no warranty or representation as to its accuracy.  
Subject to errors, omission, changes of price, prior sale or withdrawal from market without notice.