

HILLTOWN PLAZA

ROUTE 309 & ROUTE 113
SOUDERTON (BUCKS COUNTY), PA



HILLTOWN PLAZA - FOR LEASE

13,000 SQUARE FEET AVAILABLE

LOCATION

Route 309 & Route 113
Souderton (Bucks County), PA

PROPERTY HIGHLIGHTS

- 13,000 Square Feet Available with Existing Outdoor Play Area
- Located in 330,000 SF Home Depot (Shadow Anchored) & Giant Anchored Shopping Center
- Excellent Exposure on Highly Traveled Route 309 & Route 113



PLEASE CONTACT:

Michele Grasso
Managing Director
T. 215-701-3818
michelegrasso@eusrealty.com

Gregory R. Bianchi
Vice President
T. 215-701-3840
gbianchi@eusrealty.com

Brandon Blue
Sales Associate
T. 215-501-7305
bbblue@eusrealty.com

LEASED BY:

USREALTY
ASSOCIATES, INC.
A Full Service Real Estate Company

DEVELOPED BY:



120-124 E. Lancaster Avenue - Suite 101 - Ardmore - PA - 19003
T. 215-557-9900 F. 215-701-3839
www.eusrealty.com

HILLTOWN PLAZA

ROUTE 309 & ROUTE 113
SOUDERTON (BUCKS COUNTY), PA

HILLTOWN PLAZA

13,000 SQUARE FEET AVAILABLE



DEMOGRAPHIC OVERVIEW REPORT

POPULATION	1 MILE	3 MILE	5 MILE
2019 TOTAL POPULATION:	5,536	45,624	93,377
2024 POPULATION:	5,783	46,374	94,765
POP GROWTH 2019-2024:	4.46%	1.64%	1.49%
HOUSEHOLDS			
2019 TOTAL HOUSEHOLDS:	2,181	17,390	35,288
HH GROWTH 2019-2024:	4.63%	1.60%	1.43%
MEDIAN HOUSEHOLD INC:	\$66,766	\$75,144	\$78,234

PLEASE CONTACT:

Gregory R. Bianchi
Vice President
T. 215-701-3840
gbianchi@eusrealty.com

Michele Grasso
Managing Director
T. 215-701-3818
michelegrasso@eusrealty.com

Brandon Blue
Sales Associate
T. 215-501-7305
bblue@eusrealty.com

LEASED BY:



DEVELOPED BY:

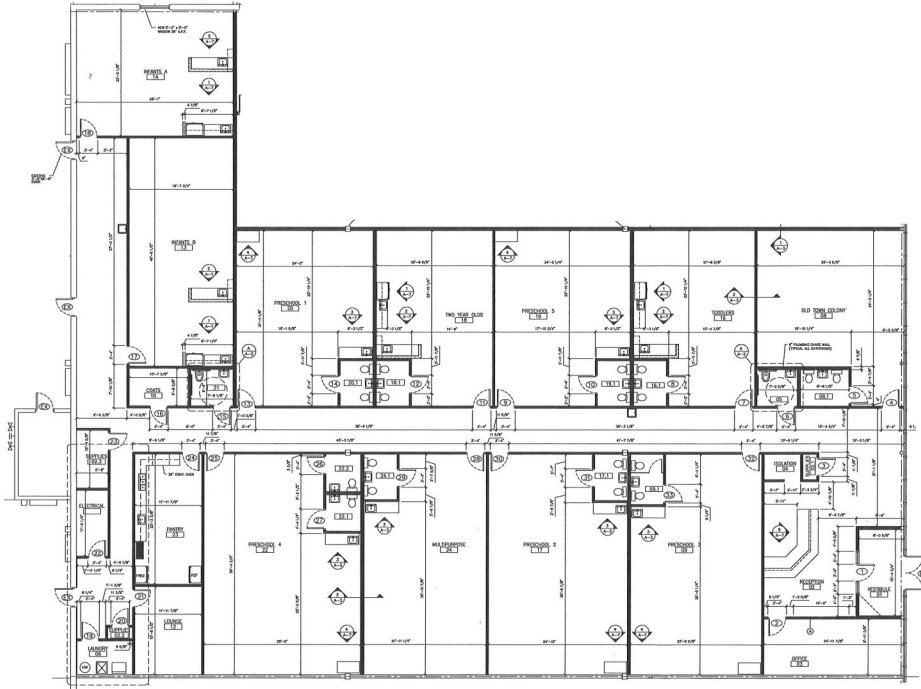


120-124 E. Lancaster Avenue - Suite 101 - Ardmore - PA - 19003
T. 215-557-9900 F. 215-701-3839
www.eusrealty.com

The forgoing information was furnished by sources deemed reliable, but no warranty or representation as to its accuracy. Subject to errors, omission, changes of price, prior sale or withdrawal from market without notice.

HILLTOWN PLAZA

ROUTE 309 & ROUTE 113
SOUDERTON (BUCKS COUNTY), PA



PLEASE CONTACT:

Michele Grasso
Managing Director
T. 215-701-3818
michelegrasso@eusrealty.com

Gregory R. Bianchi
Vice President
T. 215-701-3840
gbianchi@eusrealty.com

Brandon Blue
Sales Associate
T. 215-501-7305
bbblue@eusrealty.com

LEASED BY:



A Full Service Real Estate Company

DEVELOPED BY:



120-124 E. Lancaster Avenue - Suite 101 - Ardmore - PA - 19003
T.215-557-9900 F.215-701-3839
www.eusrealty.com

*The forgoing information was furnished by sources deemed reliable, but no warranty or representation as to its accuracy.
Subject to errors, omission, changes of price, prior sale or withdrawal from market without notice.*