

2655 NESHAMINY INTERPLEX DRIVE

FEASTERVILLE (BUCKS COUNTY), PA



OFFICE SPACE - FOR LEASE

4,325 SQUARE FEET

LOCATION

2655 Neshaminy Interplex Drive
Feasterville (Bucks County), PA

PROPERTY HIGHLIGHTS

- 4,325 Square Feet Available
- Move-In Ready
- Private Offices and Conference Rooms
- On-Site Parking



PLEASE CONTACT:

Brandon Blue
Sales Associate
T. 215-501-7305
bblue@eusrealty.com

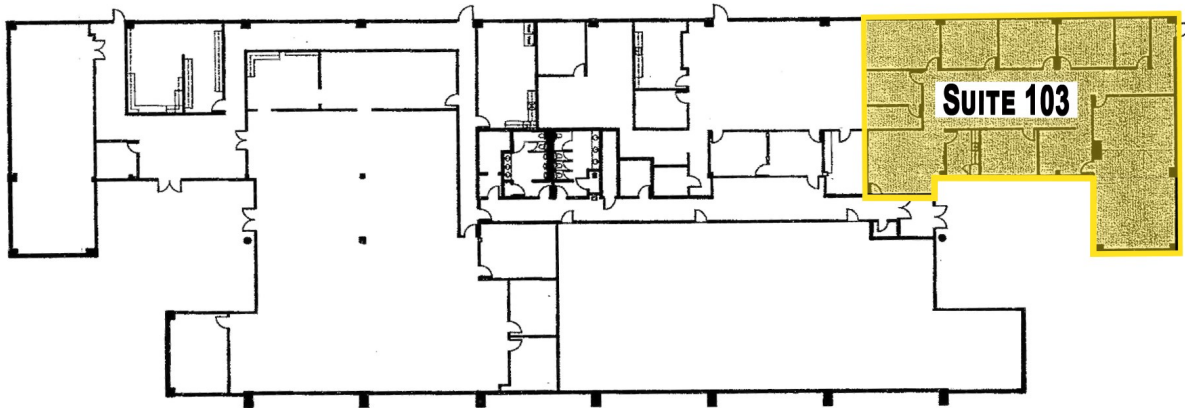
EUSREALTY
ASSOCIATES, INC.
A Full Service Real Estate Company

120-124 E. Lancaster Avenue - Suite 101 - Ardmore - PA - 19003
T.215-557-9900 F.215-701-3839
www.eusrealty.com

The forgoing information was furnished by sources deemed reliable, but no warranty or representation as to its accuracy.
Subject to errors, omission, changes of price, prior sale or withdrawal from market without notice.

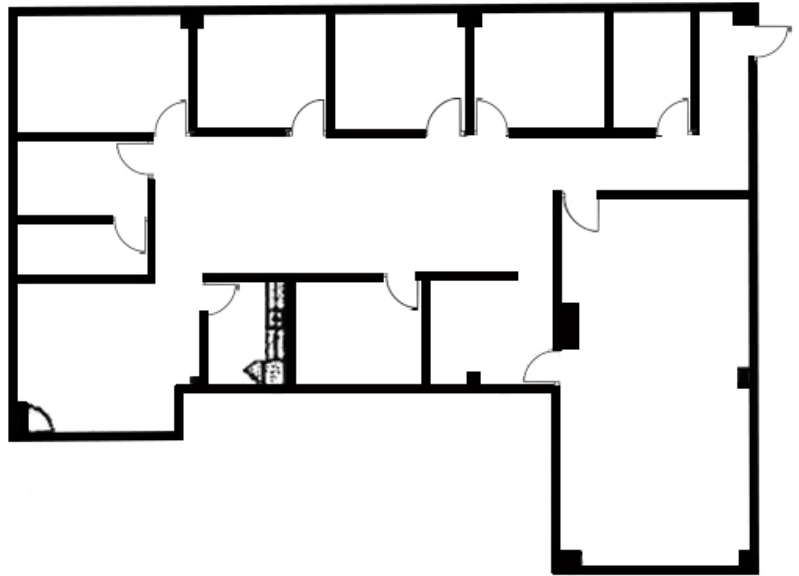
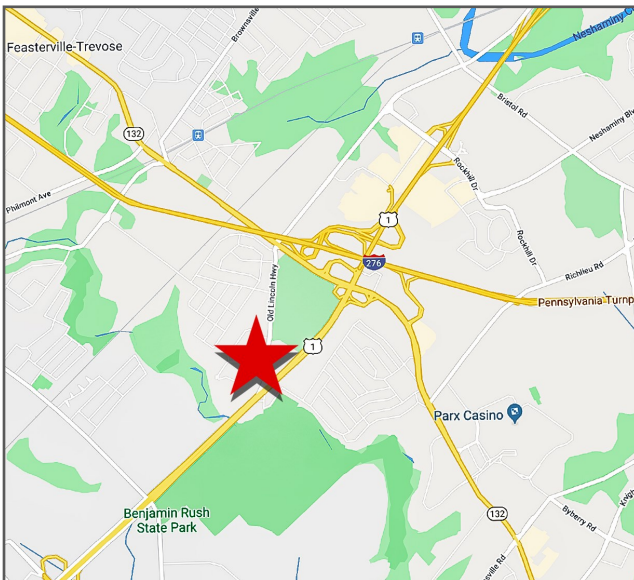
2655 NESHAMINY INTERPLEX DRIVE

FEASTERVILLE (BUCKS COUNTY), PA



GENERAL NOTE: ALL ROOM DIMENSIONS ARE APPROXIMATE
AND SHOULD BE VERIFIED FOR COMPLETE ACCURACY

FOR LEASE - SUITE 103
APPROX. 4,325 SQ FT



PLEASE CONTACT:

Brandon Blue
Sales Associate
T. 215-501-7305
bblue@eusrealty.com

EUSREALTY
ASSOCIATES, INC.
A Full Service Real Estate Company

120-124 E. Lancaster Avenue - Suite 101 - Ardmore - PA - 19003

T.215-557-9900 F.215-701-3839

www.eusrealty.com