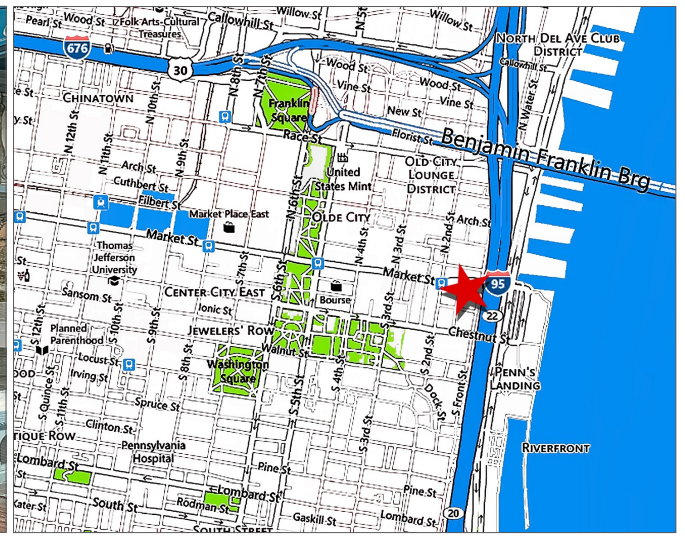


108 MARKET STREET

PHILADELPHIA, PA



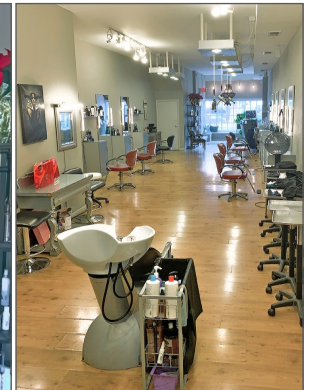
SALON OPPORTUNITY - FOR LEASE

LOCATION

108 Market Street (Old City)
Philadelphia, PA

PROPERTY HIGHLIGHTS

- 2,200 +/- Square Feet on First Floor plus Lower Level
- Existing Salon at High Profile Location
- Beauty Salon Inventory Sold Separately or as Vacant
- Within Close Proximity of the Waterfront, Philadelphia Historic Sites and Easy Access to the Ben Franklin Bridge
- Excellent Pedestrian and Vehicular Traffic
- Neighbors Include: The Franklin Fountain, Shane Confectionary, Philly Gourmet Steaks and La Famiglia Restaurant



PLEASE CONTACT:

Gregory R. Bianchi

Vice President

T. 215-701-3840

gbianchi@eusrealty.com

EUSREALTY

ASSOCIATES, INC.

A Full Service Real Estate Company

120-124 E. Lancaster Avenue - Suite 101 - Ardmore - PA - 19003

T. 215-557-9900 F. 215-701-3839

www.eusrealty.com

The foregoing information was furnished by sources deemed reliable, but no warranty or representation as to its accuracy. Subject to errors, omission, changes of price, prior sale or withdrawal from market without notice.