

2851 WEST HUNTING PARK AVENUE

BETWEEN FOX STREET AND HENRY AVENUE
PHILADELPHIA, PA



ADJOINING BAKERS CENTRE

A 30 +/- Acre Mixed-Use Project Anchored by a 70,000 SF ShopRite

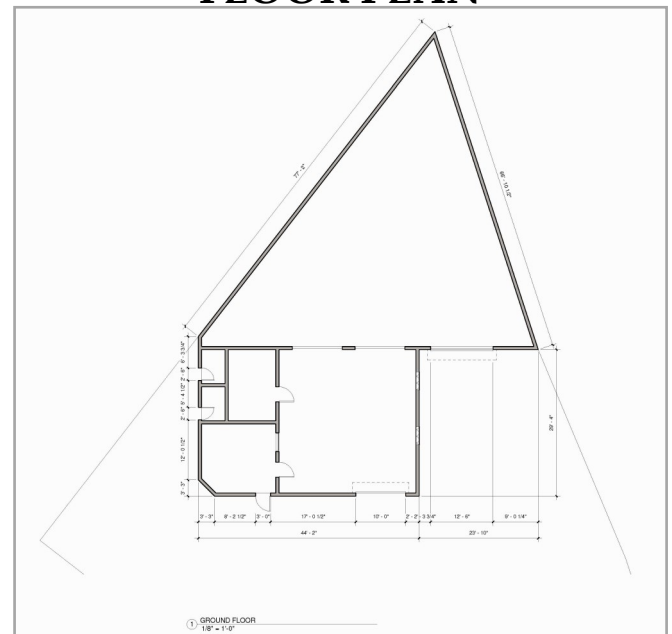
LOCATION

2851 West Hunting Park Avenue
Philadelphia, PA

PROPERTY HIGHLIGHTS

- 3,350 +/- Square Foot Building
- 9,450 +/- Square Foot Lot
- Zoning CMX-3
- Ideal For Retail, Office Space or Medical Users
- Excellent Access to I-76, Rte. 1 & Rte. 13
- Close Proximity To Chestnut Hill, East Falls, South Germantown, Allegheny West, Tioga & Manayunk
- On Site Parking

FLOOR PLAN



PLEASE CONTACT:

Gregory R. Bianchi
Vice President
T. 215-701-3840
gbianchi@eusrealty.com

Michele Grasso
Managing Director
T. 215-701-3818
michelegrasso@eusrealty.com

LEASED BY
USREALTY
ASSOCIATES, INC.
A Full Service Real Estate Company

120-124 E. Lancaster Avenue - Suite 101 - Ardmore - PA - 19003

T. 215-557-9900 F. 215-701-3839

www.eusrealty.com

2851 WEST HUNTING PARK AVENUE

BETWEEN FOX STREET AND HENRY AVENUE

PHILADELPHIA, PA



PLEASE CONTACT:

Gregory R. Bianchi
Vice President
T. 215-701-3840
gbianchi@eusrealty.com

Michele Grasso
Managing Director
T. 215-701-3818
michelegrasso@eusrealty.com

LEASED BY
USREALTY
ASSOCIATES, INC.
A Full Service Real Estate Company

120-124 E. Lancaster Avenue - Suite 101 - Ardmore - PA - 19003

T. 215-557-9900 F. 215-701-3839

www.eusrealty.com