

# COMMERCIAL SPACE @ 6TH AVENUE PLAZA

254 E. Jimmy Leeds Road  
Galloway Township (Atlantic County), NJ

# RETAIL/OFFICE

Available for  
Sale/Lease



## Property Highlights:

- 1,600 - 5,000 SF Available
- Join Proposed Medicap Pharmacy with Drive-Thru
- New Construction
- FALL 2016 Delivery
- Signaled Intersection
- Traffic Count: 33,000VPD
- On Site Parking



## Leasing Information:



120-124 E. Lancaster Avenue  
Suite 101  
Ardmore, PA 19003  
T: 215-701-3840  
F: 215-701-3839

Gregory Bianchi  
Vice President

Phone: 215-701-3840

[gbianchi@eusrealty.com](mailto:gbianchi@eusrealty.com)

[www.eusrealty.com](http://www.eusrealty.com)

Meg Worthington

Phone: 609-487-2400

[mworthington.frankelre@comcast.net](mailto:mworthington.frankelre@comcast.net)



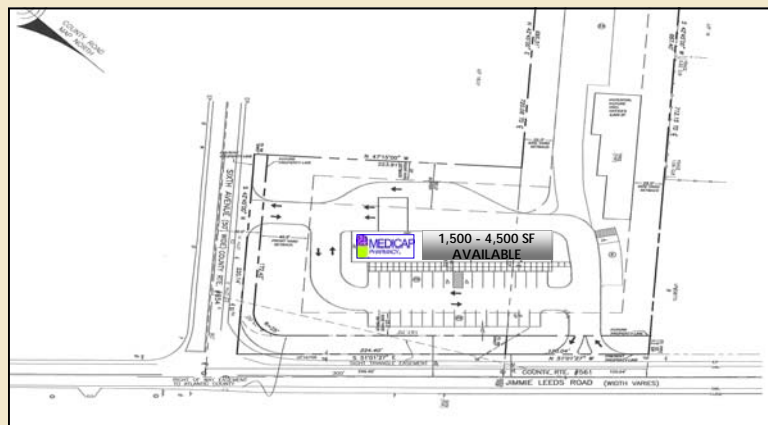
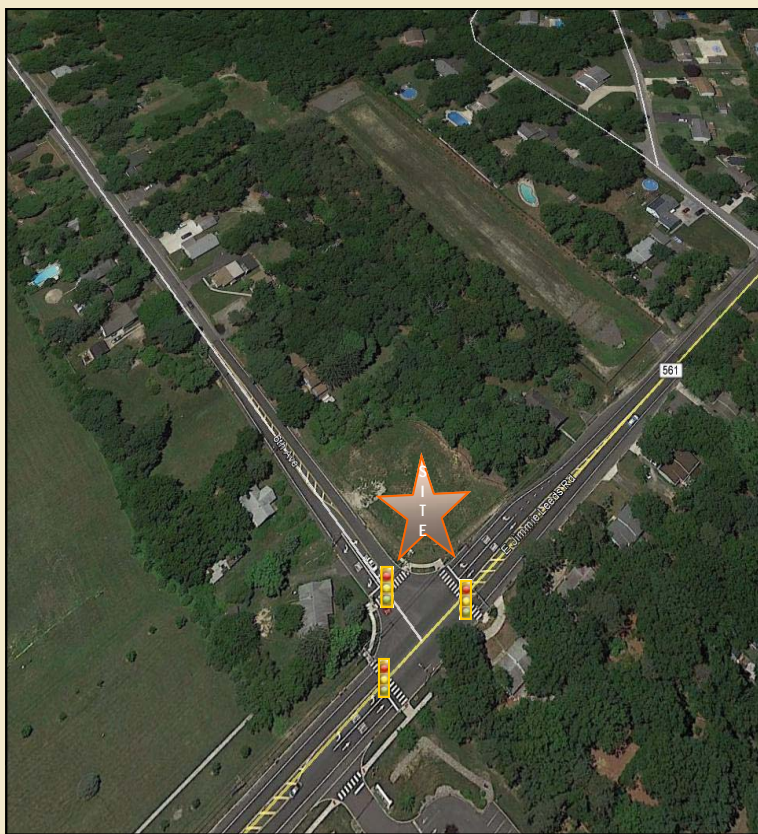
Information provided by reliable sources. Subject to errors, omissions, price change, prior sales or withdrawal from market without notice.

# COMMERCIAL SPACE @ 6TH AVENUE PLAZA

254 E. Jimmy Leeds Road  
Galloway Township (Atlantic County), NJ

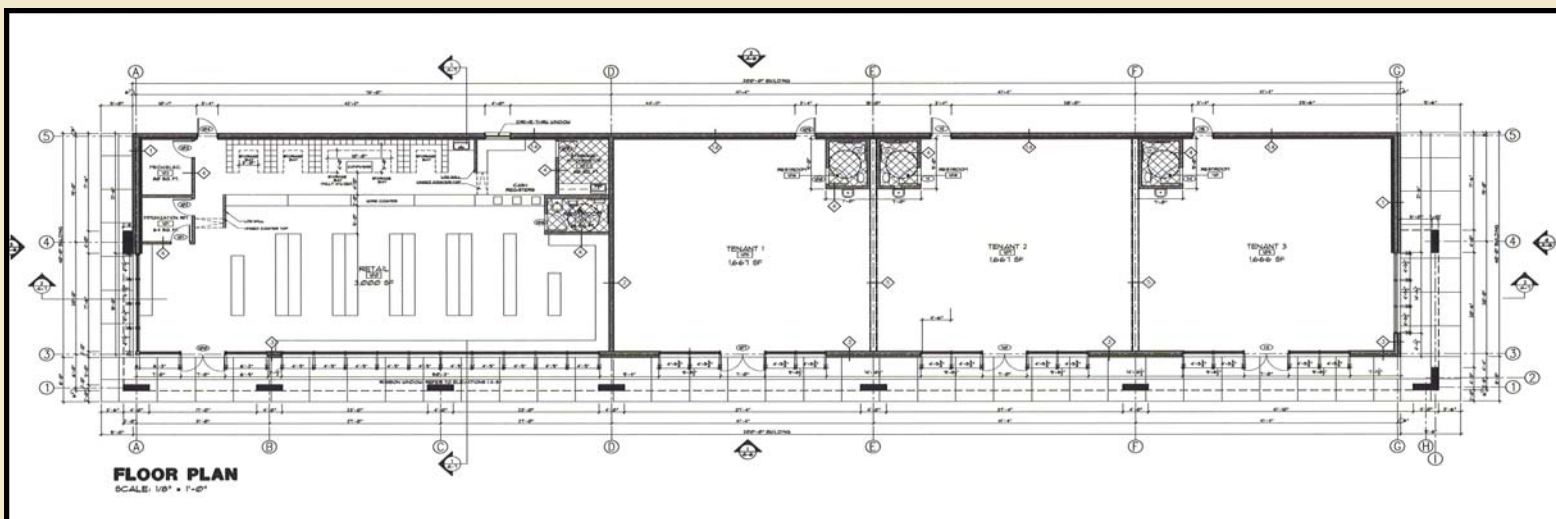
# RETAIL/OFFICE

Available for  
Sale/Lease



POPULATION	1-MILE	3-MILES	10-MILES
2000 Population	3,076	27,754	47,958
2010 Population	3,053	31,758	54,815
2013 Population	3,100	32,026	55,345
2018 Population	3,350	34,160	58,085

INCOME	1-MILE	3-MILES	10-MILES
2013 Median Household Income	\$72,932	\$60,736	\$55,809
2013 Per Capita Income	\$29,901	\$28,749	\$25,772
2013 Average Household Income	\$91,777	\$77,365	\$70,835



## Leasing Information:



120-124 E. Lancaster Avenue  
Suite 101  
Ardmore, PA 19003  
T: 215-701-3840  
F: 215-701-3839

Gregory Bianchi  
Vice President

Phone: 215-701-3840  
gbianchi@eusrealty.com  
www.eusrealty.com

Meg Worthington

Phone: 609-487-2400

mworthington.frankelre@comcast.net



Information provided by reliable sources. Subject to errors, omissions, price change, prior sales or withdrawal from market without notice.